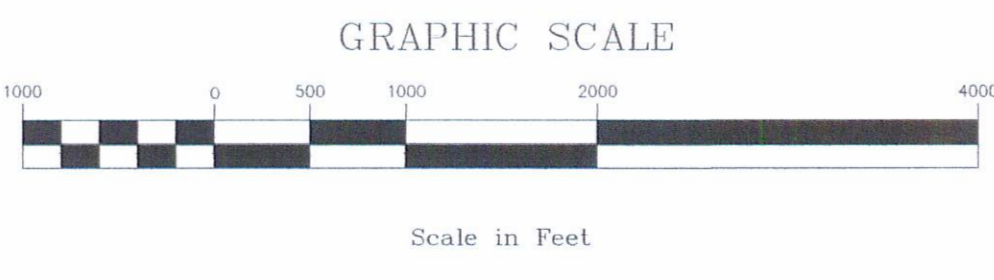


APPROVED WETLANDS INVENTORY
 Oregon Division of State Lands
 Meets Local Wetland Inventory standards
 Date 7/00 Approved by J. Morlan

Watershed Boundary	— · — · — ·	Access Denied	□
Drainage	— · — · — ·	Wetland	■
Urban Growth Boundary	— · — · — ·	Wetland Code	SSR-1
Sample Point	●		58



Funding for this project was provided by a grant from the Oregon Division of State Lands, Wetlands Planning Assistance grant program. This grant program is supported by a grant from the U.S. Environmental Protection Agency under authority of the Clean Water Act.

THIS MAP IS FOR PLANNING PURPOSES ONLY
 WETLAND BOUNDARIES ARE APPROXIMATE
 AND SUBJECT TO CHANGE

This map has NOT been approved by the wetland regulatory agencies for permitting purposes. You are advised to contact the Oregon Division of State Lands and the U.S. Army Corps of Engineers with any regulatory questions. There may be additional wetlands within the study area that have not been identified. All wetlands, whether mapped or not, are subject to Federal and State permit requirements. There may also be areas of non-wetland within areas identified as wetlands on this map. In all cases, Federal and State agencies will use actual field conditions, rather than this map, to determine wetland boundaries.

DATE: June, 2000
 BASE MAP INFO: Supplied by City of Sweet Home, Oregon
 : and Linn County
 JOB NO.: 9-1884

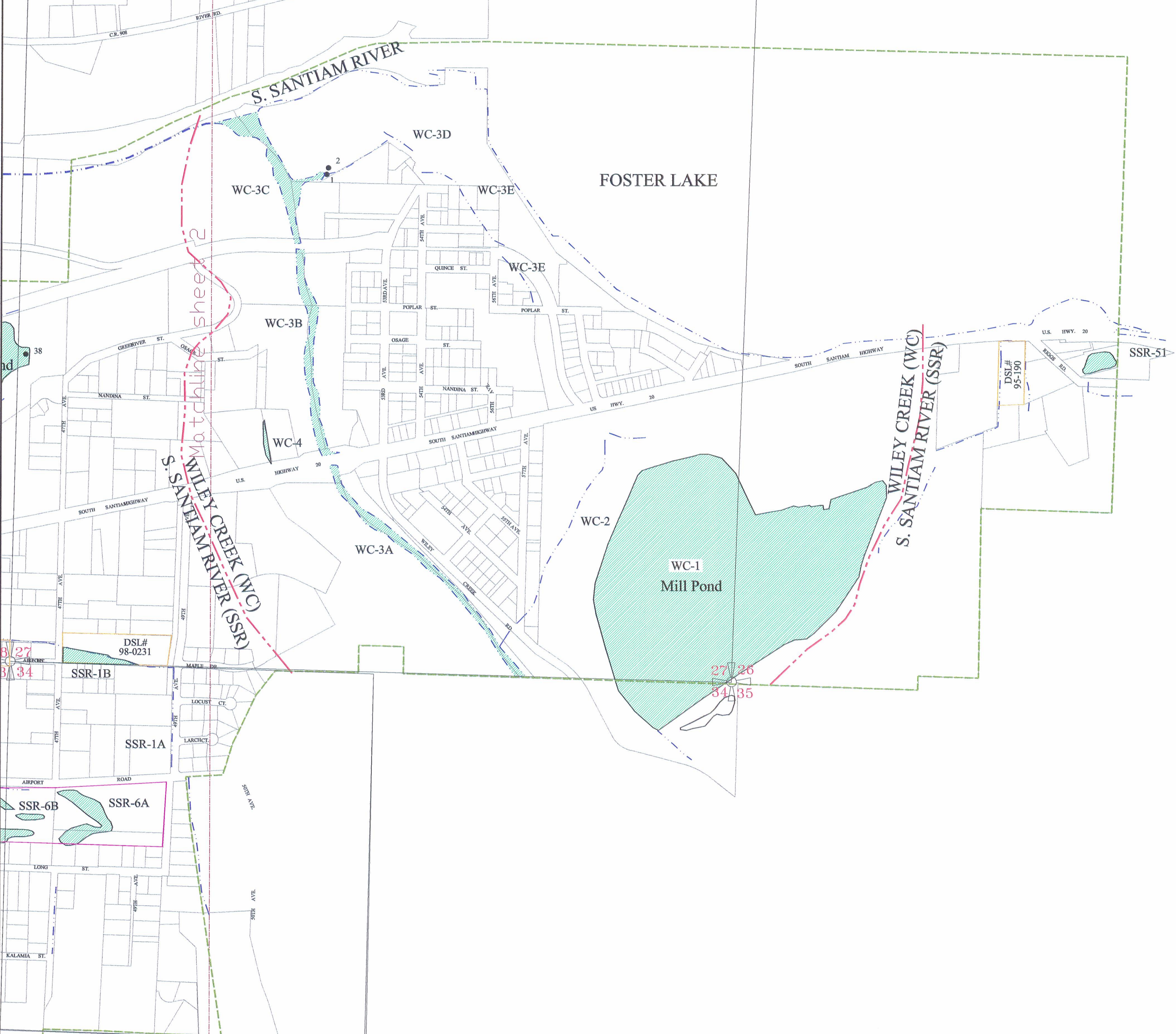
Sweet Home Local Wetlands Inventory

Pacific Habitat Services, Inc.
 9450 SW Commerce Circle, Suite 180
 Wilsonville, Oregon 97070
 Phone: (503) 570-0800

Reference
 Sheet

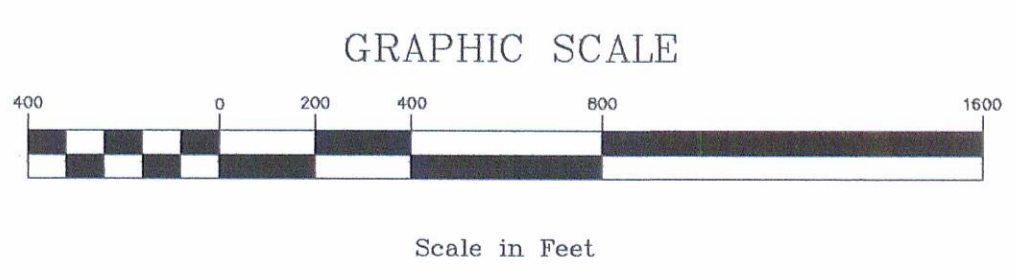
21/22
28/27

22/23
27/26



APPROVED WETLANDS INVENTORY
Oregon Division of State Lands
Meets Local Wetland Inventory standards
Date: 7/00 Approved by: J. Moran

Watershed Boundary	--- -- --	Access Denied	□
Drainage	--- -- --	Wetland	■
Urban Growth Boundary	--- -- --	Wetland Code	WC-1
		Sample Point	●
		SSR-1	58



Funding for this project was provided by a grant from the Oregon Division of State Lands, Wetlands Planning Assistance grant program. This grant program is supported by a grant from the U.S. Environmental Protection Agency under authority of the Clean Water Act.

THIS MAP IS FOR PLANNING PURPOSES ONLY
WETLAND BOUNDARIES ARE APPROXIMATE
AND SUBJECT TO CHANGE

This map has NOT been approved by the wetland regulatory agencies for permitting purposes. You are advised to contact the Oregon Division of State Lands and the U.S. Army Corps of Engineers with any regulatory questions. There may be additional wetlands within the study area that have not been identified. All wetlands, whether mapped or not, are subject to Federal and State permit requirements. There may also be areas of non-wetland within areas identified as wetlands on this map. In all cases, Federal and State agencies will use actual field conditions, rather than this map, to determine wetland boundaries.

DATE: June, 2000
BASE MAP INFO: Supplied by City of Sweet Home, : and Linn County
JOB NO.: 9-1884

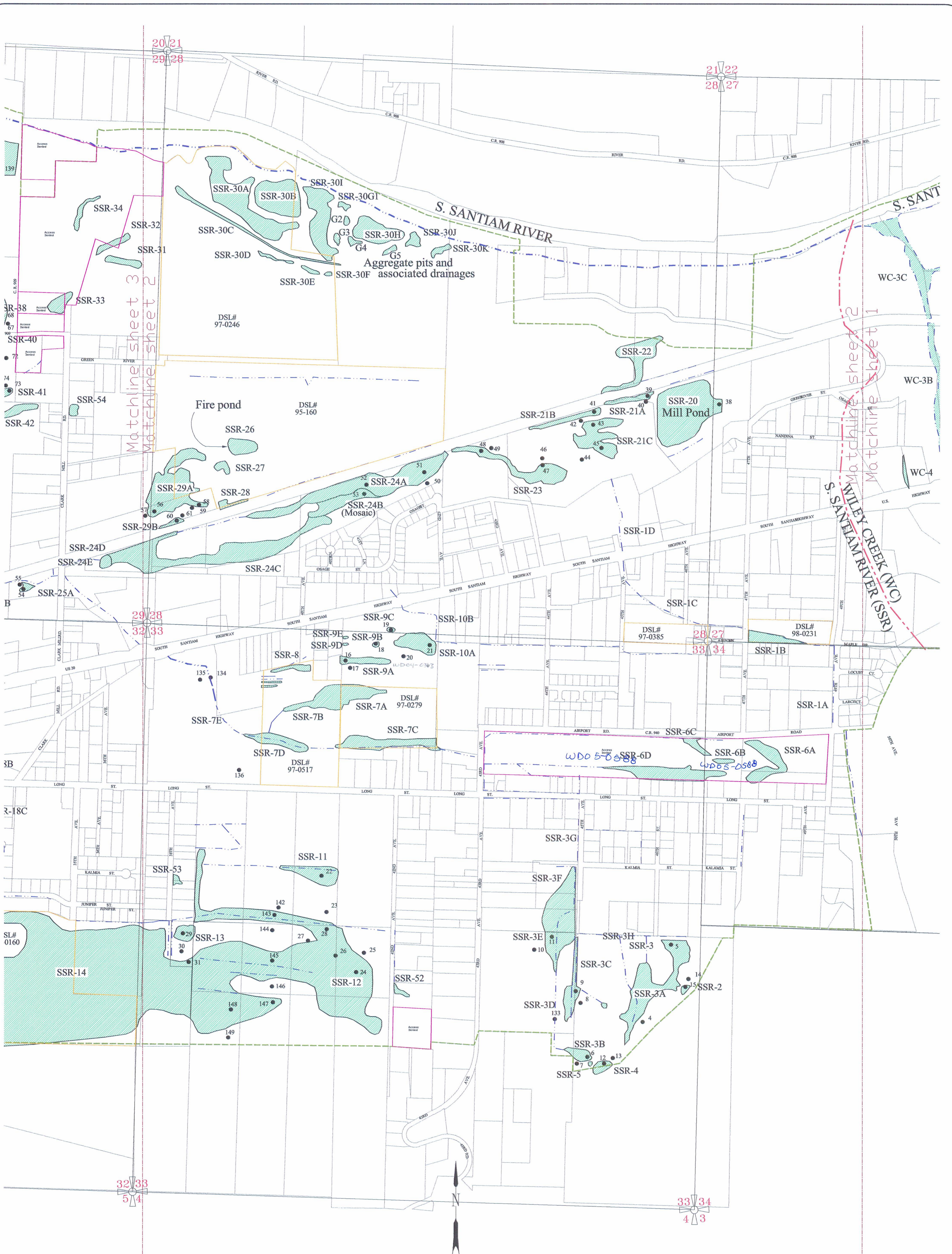
Sweet Home Local Wetlands Inventory

Pacific Habitat Services, Inc.
9450 SW Commerce Circle, Suite 180
Wilsonville, Oregon 97070
Phone: (503) 570-0800



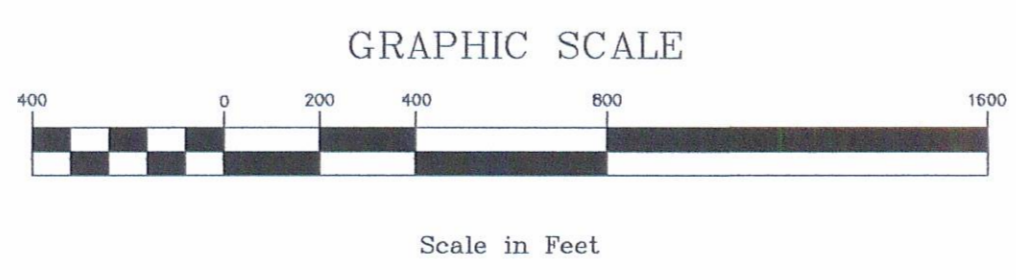
Sheet: 1

of: 4



APPROVED WETLANDS INVENTORY
 Oregon Division of State Lands
 Meets Local Wetland Inventory standards
 Date 7/00 Approved by J. Morlan

- | | | |
|-----------------------|---------------|---------------|
| Watershed Boundary | Access Denied | Access Denied |
| Drainage | Wetland | Wetland |
| Urban Growth Boundary | Wetland Code | SSR-1 |
| | Sample Point | 58 |



Funding for this project was provided by a grant from the Oregon Division of State Lands, Wetlands Planning Assistance grant program. This grant program is supported by a grant from the U.S. Environmental Protection Agency under authority of the Clean Water Act.

THIS MAP IS FOR PLANNING PURPOSES ONLY
 WETLAND BOUNDARIES ARE APPROXIMATE
 AND SUBJECT TO CHANGE

This map has NOT been approved by the wetland regulatory agencies for permitting purposes. You are advised to contact the Oregon Division of State Lands and the U.S. Army Corps of Engineers with any regulatory questions. There may be additional wetlands within the study area that have not been identified. All wetlands, whether mapped or not, are subject to Federal and State permit requirements. There may also be areas of non-wetland within areas identified as wetlands on this map. In all cases, Federal and State agencies will use actual field conditions, rather than this map, to determine wetland boundaries.

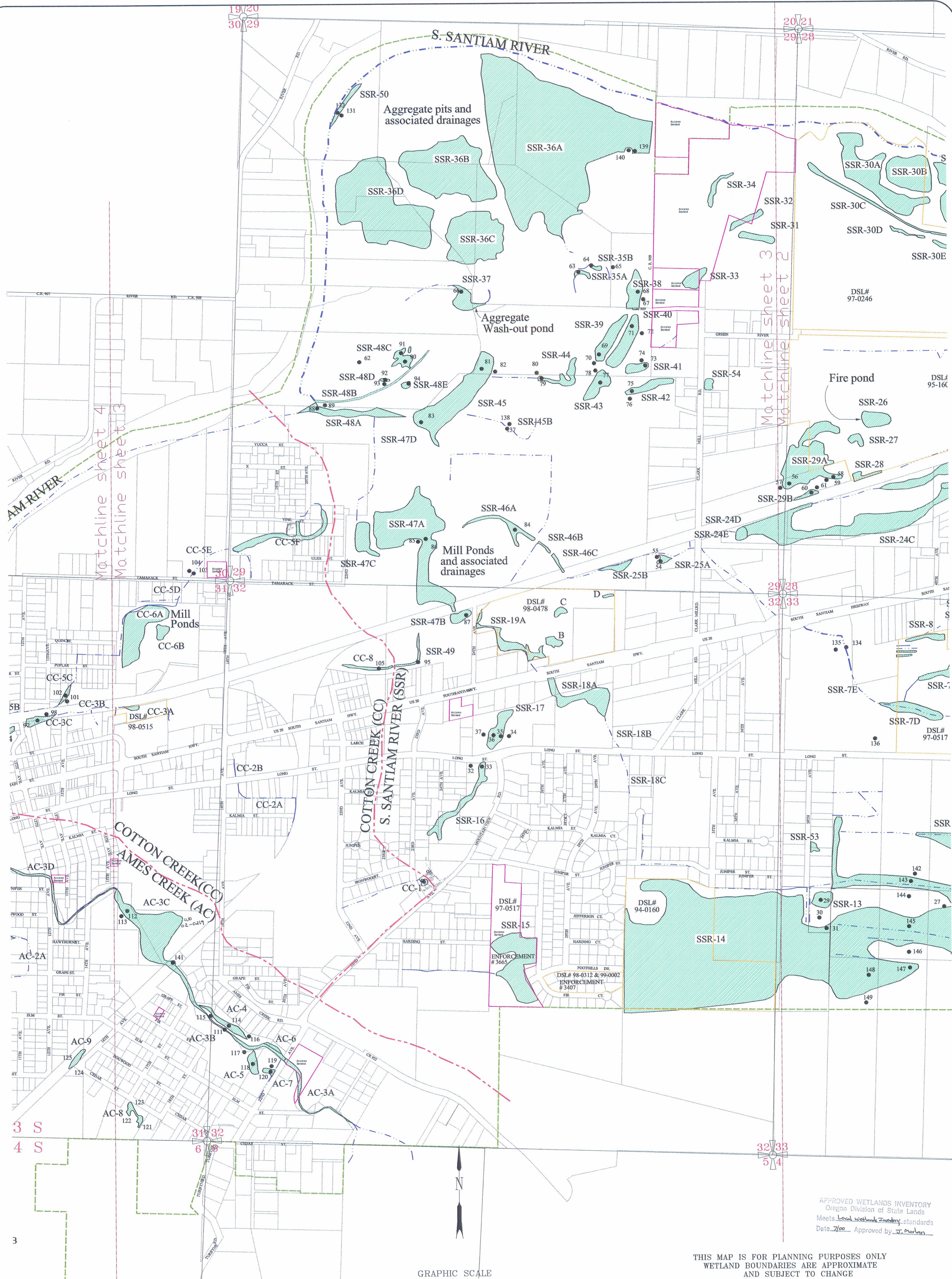
DATE: June, 2000
 BASE MAP INFO: Supplied by City of Sweet Home, : and Linn County
 JOB NO.: 9-1884

Sweet Home Local Wetlands Inventory

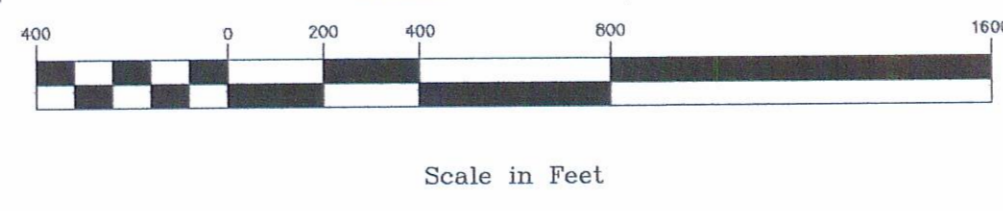
Pacific Habitat Services, Inc.
 9450 SW Commerce Circle, Suite 180
 Wilsonville, Oregon 97070
 Phone: (503) 570-0800



Sheet: 2
 of: 4



Watershed Boundary	Access Denied	Access Denied
Drainage	Wetland	Wetland Code
Urban Growth Boundary	Wetland Code	SSR-1
	Sample Point	58



Funding for this project was provided by a grant from the Oregon Division of State Lands, Wetlands Planning Assistance grant program. This grant program is supported by a grant from the U.S. Environmental Protection Agency under authority of the Clean Water Act.

APPROVED WETLANDS INVENTORY
Oregon Division of State Lands
Meets Local Wetlands Inventory standards
Date: 7/00 Approved by: J. Madan

THIS MAP IS FOR PLANNING PURPOSES ONLY
WETLAND BOUNDARIES ARE APPROXIMATE
AND SUBJECT TO CHANGE

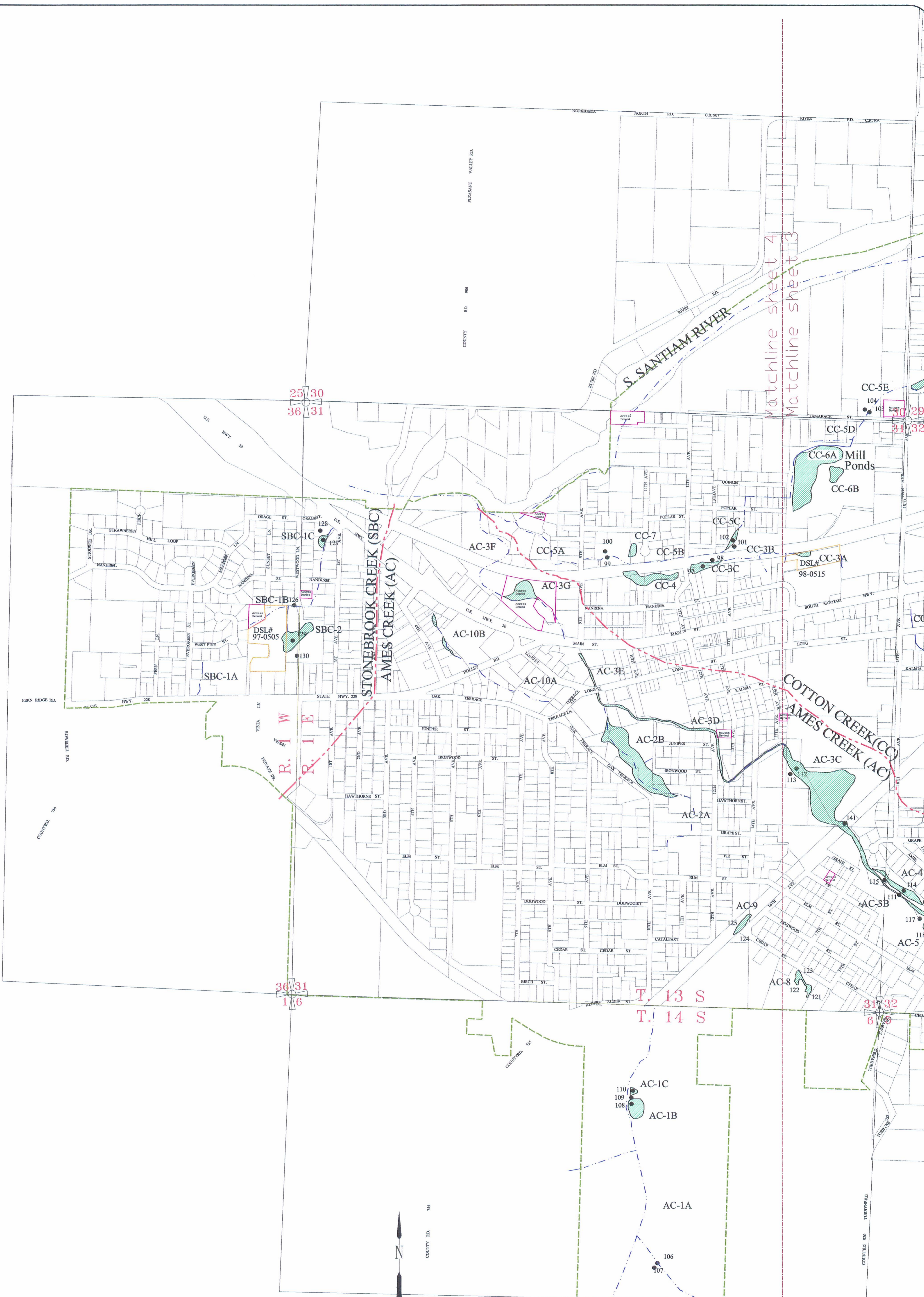
This map has NOT been approved by the wetland regulatory agencies for permitting purposes. You are advised to contact the Oregon Division of State Lands and the U.S. Army Corps of Engineers with any regulatory questions. There may be additional wetlands within the study area that have not been identified. All wetlands, whether mapped or not, are subject to Federal and State permit requirements. There may also be areas of non-wetland within areas identified as wetlands on this map. In all cases, Federal and State agencies will use actual field conditions, rather than this map, to determine wetland boundaries.

DATE: June, 2000
BASE MAP INFO: Supplied by City of Sweet Home, and Linn County
JOB NO.: 9-1884

Sweet Home Local Wetlands Inventory

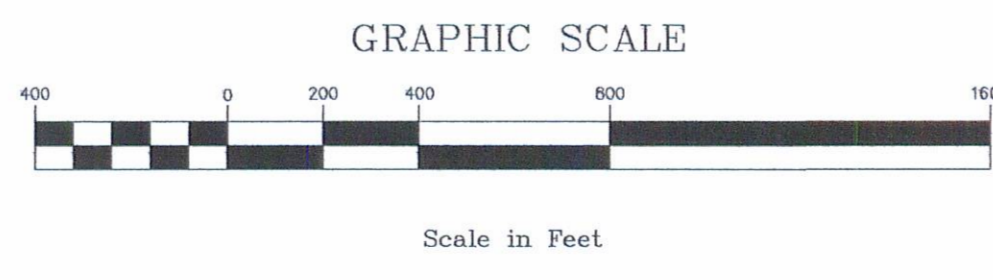
Pacific Habitat Services, Inc.
9450 SW Commerce Circle, Suite 180
Wilsonville, Oregon 97070
Phone: (503) 570-0800

Sheet: 3
of: 4



APPROVED WETLANDS INVENTORY
Oregon Division of State Lands
Meets Local Wetlands Inventory standards
Date 7/00 - Approved by J. Marlan

Watershed Boundary	Access Denied	Access Denied
Drainage	Wetland	Wetland
Urban Growth Boundary	Wetland Code	SSR-1
	Sample Point	58



Funding for this project was provided by a grant from the Oregon Division of State Lands, Wetlands Planning Assistance grant program. This grant program is supported by a grant from the U.S. Environmental Protection Agency under authority of the Clean Water Act.

THIS MAP IS FOR PLANNING PURPOSES ONLY
WETLAND BOUNDARIES ARE APPROXIMATE
AND SUBJECT TO CHANGE

This map has NOT been approved by the wetland regulatory agencies for permitting purposes. You are advised to contact the Oregon Division of State Lands and the U.S. Army Corps of Engineers with any regulatory questions. There may be additional wetlands within the study area that have not been identified. All wetlands, whether mapped or not, are subject to Federal and State permit requirements. There may also be areas of non-wetland within areas identified as wetlands on this map. In all cases, Federal and State agencies will use actual field conditions, rather than this map, to determine wetland boundaries.

DATE:	June, 2000
BASE MAP INFO:	Supplied by City of Sweet Home, and Linn County
JOB NO.:	9-1884

Sweet Home Local Wetlands Inventory

Pacific Habitat Services, Inc.
9450 SW Commerce Circle, Suite 180
Wilsonville, Oregon 97070
Phone: (503) 570-0800