

ORDINANCE BILL NO. 6 FOR 2003
ORDINANCE NO. 1152

AN ORDINANCE AMENDING THE OFFICIAL SWEET HOME ZONING MAP, SAID MAP BEING A PART OF ORDINANCE NO. 644 AND DECLARING A NEED FOR EXPEDIENCY.

WHEREAS, the City of Sweet Home declares a need for expediency for the purposes of protecting the health, safety and welfare of Sweet Home residents, for the health and welfare of the natural environment and for the purposes of securing short term and long term economic security for the community.

WHEREAS, the Planning Commission of the City of Sweet Home has considered this matter in a public hearing as provided by law and has recommended to the City Council that the Zoning Map amendment be made as hereinafter provided; and

WHEREAS, the City Council held a public hearing on this matter on August 26, 2003;

NOW, THEREFORE, THE CITY OF SWEET HOME DOES ORDAIN AS FOLLOWS:

The City Council hereby finds that the proposed Zoning Map amendment, as depicted on Attachment "A", meets the criteria requirements for Map Amendments.

Section 1. The properties, all within the City of Sweet Home, and known by Linn County Assessor's Maps and Tax Lots, described as follows, are hereby re-zoned to apply the Natural Resources Overlay Zone to the underlying base zone of the subject properties.

Map 13-1E-26 CA	Tax Lots 600, 500, 200, 400, 1402
Map 13-1E-27 B	Tax Lots 2200, 1800, 2101, 2000, 1903
Map 13-1E-27 AC	Tax Lots 1203, 3900
Map 13-1E 27 DA	Tax Lots 2101, 2300, 602, 701
Map 13-1E 27 C	Tax Lots 108, 112
Map 13-1E-29 C	Tax Lots 113, 109, 2300, 2401, 101, 2500, 2400, 4200, 3800, 3900, 3600, 4100
Map 13-1E-28	Tax Lots 700, 800, 807, 806
Map 13-1E-28 D	Tax Lots 201, 100
Map 13-1E-28 C	Tax Lots 2300, 1900, 300, 200, 600, 700, 101
Map 13-1E-29	Tax Lots 2800, 2701, 3200, 3501, 901, 1000, 2600, 3100, 2500, 1400, 2400, 3805, 2300, 2000, 2200
Map 13-1E-29 DD	Tax Lots 900, 1000, 1700
Map 13-1E-29 CC	Tax Lots 6400, 6500, 6700, 7701, 7800, 7900, 7901, 6901, 8100, 8200, 9100, 9050, 9001, 9000, 8900, 8800, 8700,
Map 13-1E-30 D	Tax Lots 1902, 1903, 1800, 1101, 1900, 1000, 1907, 1905
Map 13-1E-31 DA	Tax Lots 300, 3300, 3301, 2000, 3302, 200, 2100, 3400, 2603, 2600, 2403, 2500
Map 13-1E-31 AB	Tax Lots 100, 1100, 1201, 1301, 8000, 1400, 7900
Map 13-1E-31 BA	Tax Lots 1300, 1500, 1700, 1602, 1800, 1501, 1901
Map 13-1E-31 AD	Tax Lots 600, 604
Map-13-1E-31 BD	Tax Lots 700, 900, 1401, 1000, 1201, 402, 400, 500, 1200, 300, 600, 501, 3900, 3500, 3600
Map 13-1E-31 CA	Tax Lots 101, 300
Map 13-1E-31 AC	Tax Lots 2000, 1900, 1000, 900, 801, 800, 700, 600, 500, 401, 300, 7000, 11200, 11100, 14000, 11700, 11500, 11400, 11300, 14100, 13800, 14099

Map 13-1E- 31 DB	Tax Lots 100, 8400, 6801, 7200, 6800, 6802, 6900, 7001, 8300, 7000, 8100, 7300, 8000, 9200, 7900, 9000, 200, 7400, 7500, 7600, 9100, 5600, 5601, 4802, 4800, 4801
Map 13-1E- 32 CC	Tax Lots 1700, 5600, 5500, 5300, 5400, 101, 5800, 5100, 108, 3200, 2200, 500, 2100, 2201, 1001, 3401, 3400, 900, 3300, 1600
Map 13-1E-32 AB	Tax Lots 100, 500, 102, 1200, 400, 1001, 902, 1000, 900
Map 13-1E-32 BD	Tax Lots 600, 601, 1500, 2101, 2102, 1901, 1900, 2000, 3500
Map 13-1E-32 D	Tax Lots 600, 602
Map 13-1E-33 AC	Tax Lots 3800, 4400, 5100
Map 13-1E-33 C	Tax Lots 300, 301
Map 13-1E-33 D	Tax Lots 2800

Section 2. The properties, all within the City of Sweet Home, and known by Linn County Assessor's Maps and Tax Lots, described as follows, are hereby re-zoned to have the base Zone of Recreation Commercial and apply the Planned Development Overlay Zone.

Map 13-1E-27B	Tax Lot 1800, 1903
Map 13-1E-27C	Tax Lots 100, 108, 109, 110, 113, 2100, 2200
Map 13-1E-28	Tax Lots 701, 800, 807, 900
Map 13-1E-28C	Tax Lots 101, 300
Map 13-1E-28D	Tax Lot 201
Map 13-1E-29	Tax Lots 901, 1000, 1400, 2200, 2300, 2400, 2500, 2600, 2701, 2800, 2900, 3000, 3100, 3101, 3200, 3501, 3502, 3600, 3700, 3803, 3805
Map 13-1E-29CC	Tax Lot 1100
Map 13-1E-29DA	Tax Lot 2400

Section 3. The property, within the City of Sweet Home, and known by Linn County Assessor's Map 13-1E-28, Tax Lot 700, is hereby rezoned to apply the Planned Development Overlay Zone.

Section 4. A portion of the property, within the City of Sweet Home, and known by Linn County Assessor's Map 13-1E-28D, Tax 300, is hereby rezoned to have the base Zone of Recreation Commercial and apply the Planned Development Overlay Zone. The portion included in this action is the south west portion of the lot, including an area 150' by 480' to the toe of the hill.

Section 5. Expediency: It is in the best interest and benefit of the City that this ordinance becomes effective immediately, as set forth in the City of Sweet Home Charter, Section 29. Therefore, this ordinance shall be in full force and effect after the passage by the Council and approval by the Mayor.

PASSED by the Council and approved by the Mayor this 23rd day of Sept., 2003.



Mayor

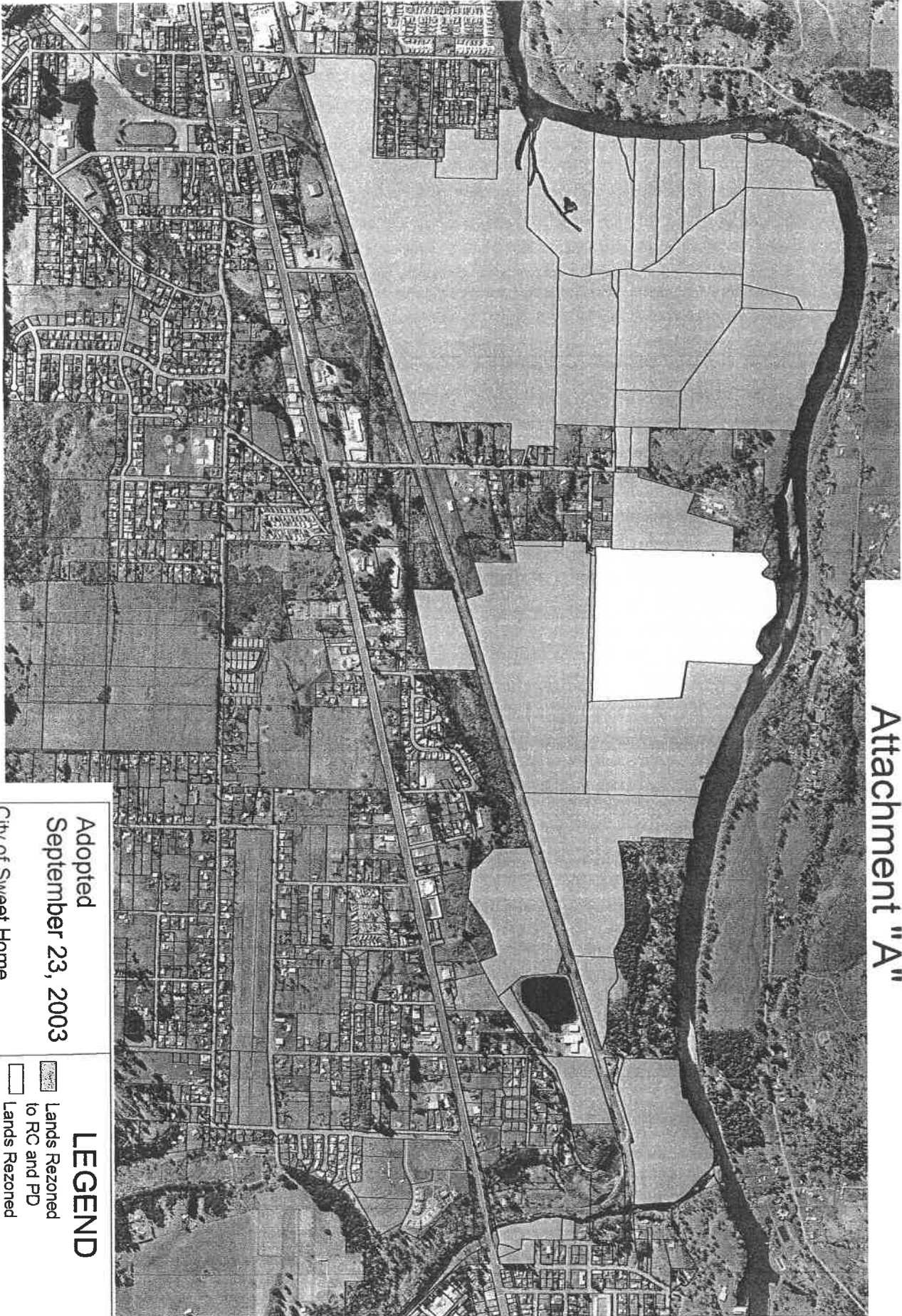
ATTEST:



City Manager - Ex Officio City Recorder

REZONED LANDS

Attachment "A"



Adopted
September 23, 2003
City of Sweet Home

PD = Planned Development
This is an Avarau Zone

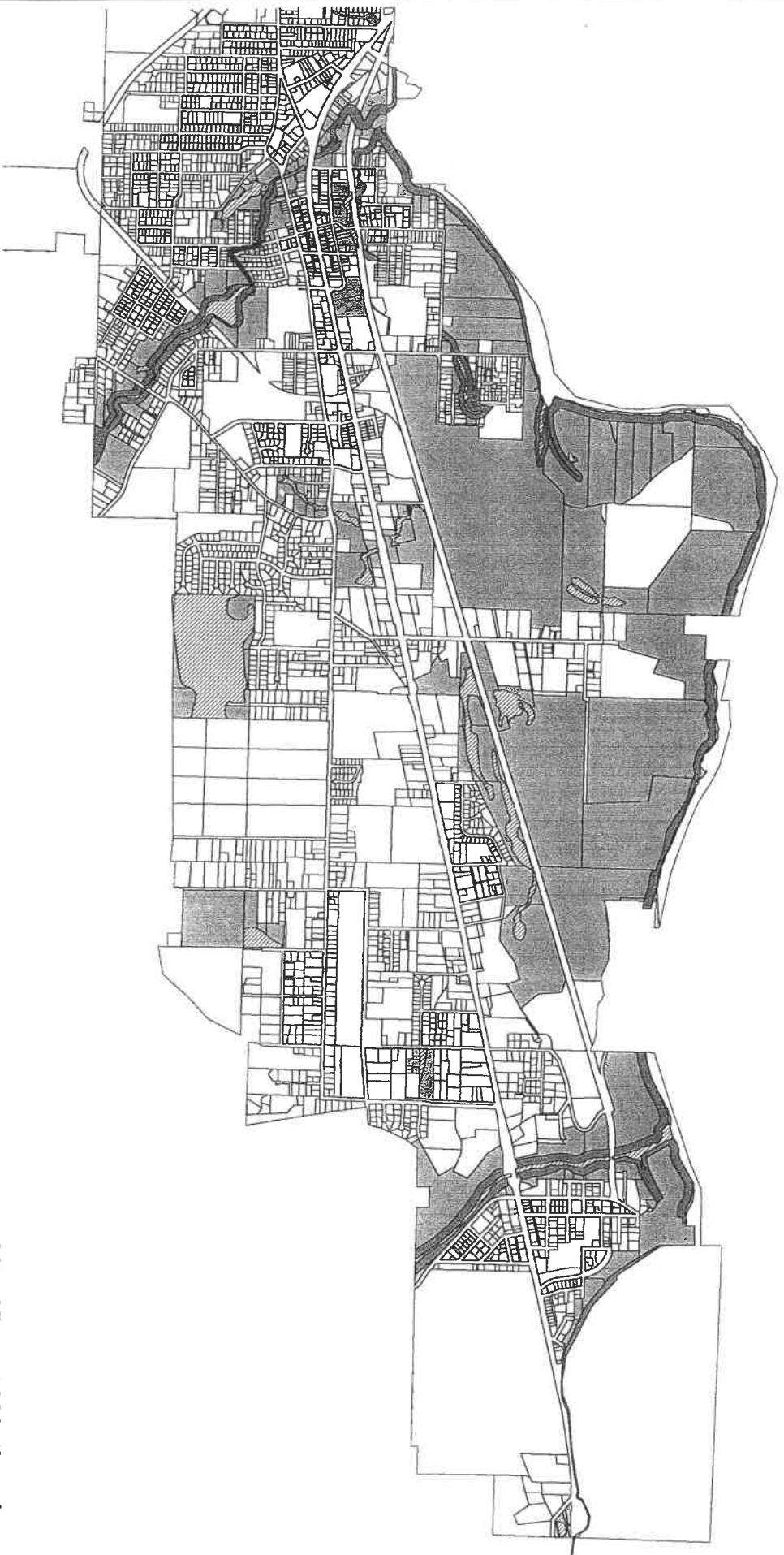
LEGEND

- Lands Rezoned to RC and PD
- Lands Rezoned to PD



0 1000 2000 3000 Feet

Natural Resource Overlay Zone



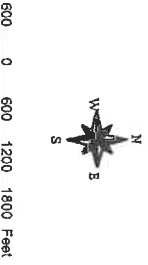
Riparian Corridors and Significant Wetlands

NOTE:

Properties shown are those which abut significant wetlands or riparian corridors.

In most cases, setback regulations would not apply to the entire property, only a portion as follows:

- South Santiam River: 75 feet
- Ames and Wiley Creek: 50 feet



- Riparian Corridors
- Significant Wetlands
- Potentially Affected Properties

DATE: September 23, 2003

Map Produced by:
City of Sweet Home
Community Development Department
541-367-8113