

Sweet Home Police Department 2012 Annual Report

January 1— December 31, 2012



(Photo courtesy of The New Era)

Contents

City Government	3
Mission Statement	4
Organizational Chart	5
Letter from the Chief	6
In the Community	7
Hiring Process	8
Patrol Services Division	9
Patrol Car Overview	10
Communications & Records Division	11
Investigations	12
Department Training	13
Property & Evidence	14
Youth Services	15
Community Events	16
Statistics	17-26





Sweet Home Administration

Craig Fentiman, Mayor

Craig Martin, City Manager

Sweet Home City Council

Jim Gourley, President

Greg Mahler, Councilor

Mary Beth Angulo, Councilor

Scott McKee Jr., Councilor

Mike Hall, Councilor

Ron Rodgers, Councilor

Sweet Home Police Department Senior Staff

Chief of Police Robert Burford

Commander Penny Leland

Sergeant Jason Van Eck

Sergeant Jeff Lynn

Mission Statement



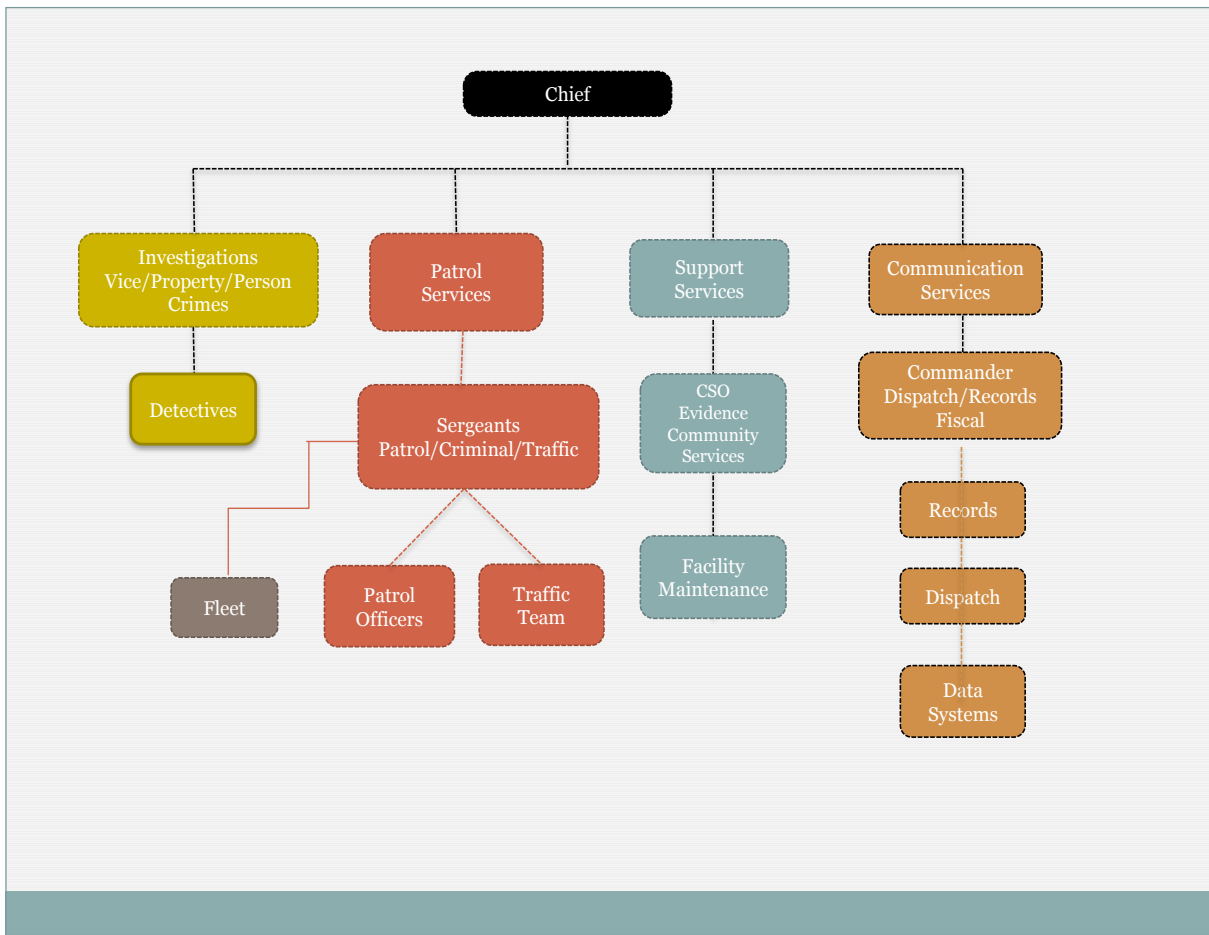
facebook

In 2012 the Sweet Home Police Department entered into Social Media and has a Facebook page. Times are changing and as a department we must change with them. By changing and adapting to Social Media the Sweet Home Police Department can expand its relevance within the community. Social Media provides a new and potentially valuable means of assisting the department and its personnel with meeting one of its found principals, Community Policing. The department's page was launched so that the citizens of Sweet Home have another source of information.

The overall intent of the department Facebook page is to assist with community outreach, problem-solving, investigations, crime prevention, and other related objectives.

The department's Facebook page has been used to provide crime prevention tips, sharing of crime data, soliciting tips about unsolved crimes, special events, missing or endangered persons, road closure, area emergencies and wanted persons.

Sweet Home Police Department Organizational Structure



Letter from the Chief

February 14, 2013

To The Mayor, City Council and to the citizens of Sweet Home:

This document represents the Sweet Home Police Department's 2012 Annual Report. This report provides a brief quantitative retrospect of the year's activities, including historical prospective. In addition to this written document, our report can also be found on the internet at www.ci.sweet-home.or.us.



2012 was yet another rebuilding year after the loss of four officers at the end of 2011. Three of these officers simply transferred to another nearby city, which offered better pay and benefits. While we have been able to hire four excellent replacements, the cost of their recruitment and training was a huge burden on our budget. In addition, our reduced manpower during 2012 severely hampered the department's ability to adequately protect the city.

While I have always advocated that Sweet Home could not and should not attempt to pay at the very top scale of equivalent cities, we must pay a fair comparable wage in order to retain our quality personnel. Simply put, saving \$6,000 a year on a Police Officer's wage package makes no sense when the City then has to pay \$60,000 to recruit and train each replacement.

Over the last several years, due primarily to revenue losses from Measure 5 compression and aggravated by the general economic downturn, we have cut our sworn officer staff from 17 down to 14 and have reduced our non-sworn dispatch staff to the absolute minimum level. The City is diligently working towards identifying and implementing a stable long-term solution to these revenue losses and the staff of SHPD will continue to provide excellent community service during these trying times.

As always, we welcome your comments and suggestions. It is through feedback that we are challenged to continually improve our services. Please feel free to call me at the office or contact us via e-mail at shpd@ci.sweet-home.or.us.

Sincerely,

A handwritten signature in black ink, appearing to read "R. H. Burford".

Robert H. Burford

Chief of Police

SHPD in the Community

We, police department personnel and families, are your neighbors, fellow parents, serve on community boards and sit right next to you in community organizations.

We belong to and serve in:

American Cancer Society
Blue Knights Law Enforcement Motorcycle Club
Boy Scouts of America
Community Singing Christmas Tree
Elks Club
FBI National Academy
FBI National Associates
Feeding America
Girl Scouts
Kiwanis Club



Kiwanis Charity Car Show for Kids

Sweet Home Boys and Girls Club
Sweet Home Community Foundation
Sweet Home Economic Development Group
Sweet Home Emergency Ministries (SHEM)
Sweet Home High School Concert Choir
Sweet Home High School Forestry Club
Sweet Home High School Sports
Sweet Home Junior High Dance Team
Sweet Home Peer Court
Sweet Home Police Department Volunteer
Sweet Home School District Employees
Sweet Home School District Youth Services Team (YST)
Sweet Home Sweet Rides Charity Car Show for Kids
Sweet Home Youth League
Various Church Organizations
Walk For the Cause



Youth League Coach

Law Enforcement Torch Run
Linn County Child Abuse Multi-Disciplinary Team
Linn County Fatality Review Team
Linn County Farm Bureau
Linn Together
Multi-Agency Accident Investigation Team (MAAIT)
National Rifle Association
Oregon Association of Chiefs of Police
Oregon Peace Officers Association (OPOA)
Police Officer Firearms Instructors Association
Relay For Life
Rotary Club
Senior Alcohol Free Entertainment (SAFE)
Seniors and Law Enforcement Together
Special Olympics Polar Plunge



Walk for the Cause 2012 ~ SHPD Participants

Hiring Process



The Sweet Home Police Department is dedicated to providing quality, professional police services to the community. That dedication begins with fielding high-quality, professional employees who are dedicated to this community. With this in mind, the department adheres to a stringent and lengthy hiring process.

During the hiring process, applications are evaluated based on experience, training and skills presented in the employment application. After an initial review of the applications, qualified applicants are invited to continue with the selection process.

The first phase involves the applicant successfully passing the Oregon Physical Abilities Test (ORPAT). The ORPAT has been standardized by the Oregon Department of Public Safety, Standards and Training (DPSST) and has to be completed within a specified time.

The next phase involves the applicant successfully passing the Police Officer Selection Test (POST). The POST is an entry-level basic skills test that helps the Sweet Home Police Department select the most qualified applicants by ensuring that applicants possess the basic cognitive skills necessary to successfully perform the job. The POST is a valid, job-related test designed specifically for law enforcement use, which measures these basic skills: Arithmetic, Reading Comprehension, Grammar and Incident Report Writing.

The final phase of the selection process is an Assessment Center. The Assessment Center is a half day process involving an interview board, a hand-written project, and various other projects which allow the selection committee to observe the applicants skills interacting with the police. The top applicants are invited to continue the process through a background investigation. The background investigation is extremely comprehensive. The background investigator talks to people that have had contact with the applicant throughout their life. The background investigator looks into personal history, academic history, work history, relationship history, drug use history, criminal history, credit history, and to anything that help determine the suitability type of employee you would be for the Sweet Home Police Department.

The top applicant is then offered a conditional job before moving into additional evaluation which consists of a comprehensive psychological examination, a medical examination and a drug test.



Patrol Services Division

Considered by many to be the backbone of the organization, the Patrol Division is the largest and most visible unit of the Sweet Home Police Department. Patrol Officers are on duty twenty four hours a day, seven days a week, and are usually the first to arrive at the scenes of accidents, crimes, or disasters.

The Patrol Division is led by two patrol sergeants, under the supervision of the Chief of Police. There are 9 Patrol Officers on the roads doing their part to keep our community safe.

Patrol Officers provide uniformed law enforcement services for criminal and non-



criminal activities. These officers provide initial investigation services on nearly all criminal activity. Patrol Officers conduct investigations, enforce traffic laws and city ordinances, provide citizen assistance, and patrol our community to prevent criminal activities and neighborhood problems.

During 2012 the police department logged in 7745 calls for service. The calls ranged from reports of thefts, assaults, criminal mischief, welfare checks, traffic complaints, drug activity and other suspicious activity. When an officer handles a call for service they must document what the call for service was about, the actions that they took, and the disposition of the call. Much of an officer's time is spent on the documentation of their activities and the events that occurred throughout their shifts. The officers must

also document all information pertaining to follow-up investigations they are conducting.

Of the 7745 calls for service, 763 calls were cleared by making an arrest. The department filed 1218 criminal charges in 2012.

The role of the Sweet Home Police Department and its officers does not end after an arrest is made. Officers and department employees continue to work closely with prosecuting attorneys for a successful resolution.

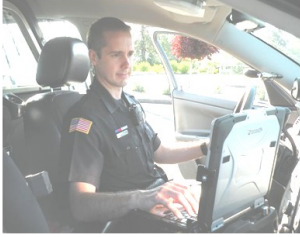
A normal patrol officer schedule consists of 12-hour shifts. However, due to the nature of police work, more often than not, the officer is required to be in court or work on an investigation after their regular shift has ended. This further illustrates that members of the Sweet Home Police Department are dedicated to making our community a better and safer place to live.

Patrol is also responsible for conducting traffic enforcement with the intent to correct problem areas and seek compliance from drivers. It is important to note that due to the reduced officer levels during the year, all traffic enforcement activities were reduced as well.

Patrol made 1575 traffic stops in 2012. There were 1156 verbal warnings given for various traffic violations. Patrol issued a total of 546 traffic citations in 2012. 310 citations were issued for Rules of the Road violations and 145 citations issued for driving without insurance.

In 2012, there were 82 motor vehicle accidents reported. There were 30 vehicles impounded for a variety of reasons. DUII enforcement resulted in 22 arrests during the

Patrol Car Overview



Mobile Data Terminal

On average, 20% of an officer's shift is spent in the office doing time consuming but necessary paperwork. With the SHPD MDT system, virtually everything can be done from the vehicle.

As a law enforcement tool, the MDT's give the officers the ability to review any previous investigative report, crime scene photographs and mug shots. With access to the state and national databases, officers can quickly check for warrants on persons or determine if vehicles or property are stolen.

Calls sent to the officers that are sensitive in nature do not need to be broadcast on the radio so that anyone with a scanner can hear.

The terminals are physically locked within each vehicle and require three levels of security individual to the officer to access. No personal information is stored on the MDT's. Even if one were stolen there is no data at risk.

SHPD MDTs can....

- Run License plates (in state or out) thru DMV
- Run Driver Registrations thru state/federal databases
- Retrieve driver local database or DMV photos for identity verification
- Lookup Names to include prior Contacts, aliases, wants, etc
- Screen toggle for Daylight/Nighttime Visibility considerations
- Touch screen laptop buttons; no mouse needed
- Instant Messaging between cars/ dispatch (without radio transmissions)
- Dispatch status screen for current calls/ unit status
- Complete Incident screen for report writing in cars (not in department)
- Mobile lookup/entry for Tickets, Property, Animal, Business Locator, etc
- Sound prompts for incoming information
- The SHPD MDT system is available worldwide, anywhere cell coverage is provided. Many systems are limited to the city area.

Future plans:

Generating of electronic traffic citations via the computer. Data is obtained from the driver's license record, the citation is printed out in the car and the information is instantly transferred to the court for processing.

Body Worn Cameras

The Sweet Home Police Department, in its effort to remain technologically advanced, has equipped each patrol officer with a Body Worn Video (BWV) device. The use of BWV is a relatively new concept. As technology has advanced, BWV has gained support and backing by Law Enforcement.

The use of BWV can significantly enhance the gathering of evidence at any incident. The camera can pick up and record everything an officer sees and hears, including details officers could never hope to recall when trying to document events and statements in a written report.

BWV footage can be used to disprove complaints against police officers. BWV evidence can be used in courts to show what happened at an incident. Written reports can come across as very clinical and it is difficult to convey the emotions and atmosphere at the time an officer interacted with an offender. Cameras, however, can capture those emotions.

When used in domestic violence situations, early accounts from victims and evidence of injuries can be documented using BWV. In the event that a complaint is subsequently withdrawn, the case can still proceed as a victimless prosecution, thereby ensuring that offenders are held accountable in court.

The Sweet Home Police Department is the only local law enforcement agency to fully embrace the concept and equip all patrol officers. The use of this technology has elicited rave reviews from prosecuting attorneys and other law enforcement professionals.

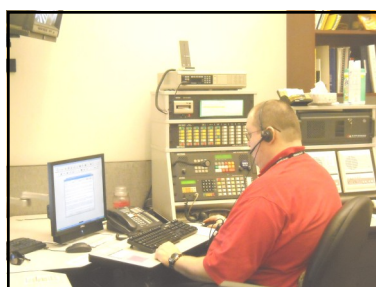


Communications & Records Division

Communications:

Sweet Home Police Department operates a secondary public safety answering point (PSAP) dispatch center and receives transferred 911 emergency calls from Linn County 911 Center. As civilian employees of the Police Department, dispatchers work in the Emergency Communications Center and often serve as a citizen's first point of contact with the Department.

Sweet Home Police Dispatchers work with police officers on a daily basis in solving crisis situations,



assisting citizens and fellow department members and ensuring that communication between citizens and officers in the field flow efficiently and

effectively. Their responsibility and service extends beyond the mere conveyance of information. Dispatchers receive extensive training in a very technical field of communications. They anticipate the information needs of field personnel and make such data immediately available to improve the quality of service provided by the department and greatly increase the safety factor for the officers in the field.

Sweet Home Police dispatchers respond to requests for information or police services received through 911 emergency calls and routine telephone calls as well as from citizens who come to police department lobby. These requests can range from emergency situations needing immediate police service, such as a report of a burglary in progress, to providing a citizen with directions to a city business establishment.

Sweet Home Police Dispatchers provide officers with a wide variety of support services such as conducting wanted person checks by computer through the state and national law enforcement computer

networks, conducting driver's license and vehicle registration checks by computer with the Oregon Department of Transportation DMV, communicating with other area police communications centers to obtain necessary information and countless other needed and vital services.

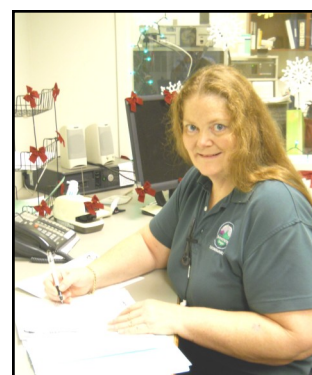
The Sweet Home Police Department utilizes a computer aided dispatch system to facilitate communications, simplify reporting in the field and maintaining required records. Police dispatchers also process requests from other police departments and government agencies. Our dispatch center operates 24 hours a day, seven days a week throughout the year and is currently staffed by only 4.5 dispatchers. This is down 1 position from safe minimum staffing levels but due to mandated layoffs in January of 2012, the department had no other viable options. For the year of 2012 dispatch processed 16,478 service transactions.

Funding for maintaining the secondary PSAP comes from the Public Safety Levy. The City transfers all their share of the dollars from the State 911-telephone tax to Linn County for the Linn County 911 Center

Records:

The record section performs numerous vital functions with regard to the storage, release and management of law enforcement information. The person assigned to this position has a multitude of responsibilities, including disseminating police reports, conducting criminal background checks, registering sexual offenders, expunging or sealing arrest and conviction records upon notification by the courts, validating all police reports and processing all business and residential alarm permits.

Because of the staffing reductions in January 2012, the person assigned to records is also assigned to dispatch.



Investigations

The Sweet Home Police Department has detectives who specialize in the investigation of burglary, auto theft, and felony property theft cases and drug crimes. The detectives are responsible for the recovery of hundreds of thousands of dollars in drugs, and stolen or damaged property each year. Detective Ogden is currently assigned to investigate narcotic crimes.



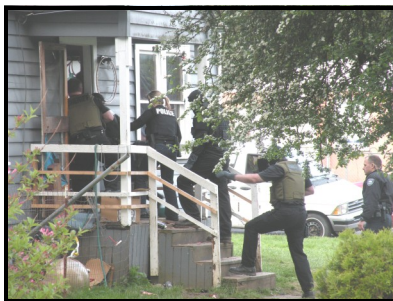
The reason we have detectives that work property crimes and drug crimes together is because they are closely related.

It is common for property crime offenders to be addicted to methamphetamine, which prompts them to commit other crimes that will financially support a drug habit.

These same offenders are frequently tied to fraud and identity theft offenders.

The Sweet Home Police Department served several property crime and/or drug crime related search warrants in 2012. The drugs that were seized at these search warrants included: marijuana, methamphetamine and prescription pills. These search warrants do not include the numerous ones that we assist other Linn County law enforcement agencies with that can somehow be tied to suspects that live in the Sweet Home area.

Detective Ogden is assigned to the unit as a narcotics detective. He also investigates any major crimes that get assigned to



him. In 2012 he was assigned 473 cases, but many of those cases were patrol related as he was temporarily assigned back on patrol while new officers were being trained. He was back to full narcotics assignment the end of 2012.

Detective Pichardo is assigned to the Detective Unit as a General Detective who handles various investigations such as Burglary, Assault, Theft, Fraud, Drug Investigations and white collar crimes such as Embezzlement. However, Detective Pichardo's specific area of expertise is in Child Abuse/Neglect, Rape and Sexual Abuse crimes. In 2012 Detective Pichardo was assigned 247 cases. Detective Pichardo is also a member of the Linn County Multi-Disciplinary Team which is organized under the Linn County District Attorney's Office and is mandated by state law.

The team consists of members of each law enforcement agency in Linn County, representatives of the DHS, Linn County Juvenile Office, Linn County Mental Health and Parole and Probation. The team meets once a week to review the cases of children who have been victims of outside crime or have become victimized because of adult criminal activity in the home. The team's goal is to prevent further trauma to the child who may be forgotten after a case has been adjudicated or while a case is waiting to go to trial. Participating members of the team believe this program is effective and of great value to the citizens of Linn County. Detective Pichardo also regularly participates in community forums and events to help educate the public on Online Safety, Identity Theft and Drug Awareness.

Training

The Oregon Department of Public Safety Standards and Training (DPSST) sets mandatory training requirements for active police officer training and the maintenance of officer certification.

Sweet Home Police Department officers and staff are able to meet these requirements by attending a minimum of 40 hours of annual in-service training. In-house certified instructors provide training in firearms, use of force, defensive tactics, Taser operation and Police Bicycle Officer. Department members assigned to SWAT, MAAIT and Detectives receive specialized training throughout the year.

The Sweet Home Police Department has officers that have individual expertise in Fingerprinting and Latent Print Identification, Child Abuse Investigations, Hostage Negotiations Techniques, Motor Vehicle Accident Reconstruction and Drug Lab Identification, just to name a few.



FIREARMS

The Sweet Home Police Department's Firearms Training Division is headed by Lead Instructor and Range Master, Timothy Trahan.

Officer Trahan is a State Certified Firearms Instructor and has led the program since 2007. Since that time he has integrated the real life experiences of veteran Officers to create a realistic approach to Police firearms training. Sergeant Jason Van Eck and Officer Brian Stevens are also State Certified Instructors and assist at the range and offer valuable insight to the training division.

The Sweet Home Police Department Firearms Training Program is based on the Oregon Department of Public Safety, Standards and Training (DPSST) Firearms training model. The qualification standards set by DPSST are the basis for our training program.

All Sweet Home Police Officers are given the opportunity for firearms training once every month, either on a volunteer or mandatory training basis.

We strive to create a fact based, realistic, problem solving approach to firearms training, all while following our policy guidelines which are based on current United States Supreme Court case law and Law Enforcement common practices and standards.



SWAT Training



Property & Evidence

Evidence Room

The primary duties of the Property & Evidence and Custodian are to maintain the chain of custody for property and evidence that are taken into the Sweet Home Police Department. The items are scanned and entered into the Records Management System (RMS) database and tracked through a bar coding system that has been in place since 2009. In 2012, over 6000 pieces of evidence were processed into the evidence room.



Approximately, 75 percent of all property taken into custody is evidence required for criminal cases.

The rest of the property include the safekeeping of found property, arrestees' property, property no longer needed as evidence, contraband, and property seized for forfeitures. Property received at SHPD also includes, but not limited to; cash, jewelry, firearms, narcotics, and general property of every description.

The Property & Evidence room is comprised of 1 civilian employee and overseen by a Sergeant & the Chief of Police. The property & evidence custodian coordinates checking items out to court and to the forensic laboratories, returning items to owners, disposal of court ordered items and auctioning of unneeded or unclaimed property.

All property received into and exiting the property room is subject to strict chain of custody constraints. Property that can be legally returned to its rightful owner is done so in a timely manner. Contraband is destroyed when it is no longer needed for a criminal case. Unclaimed general property and vehicles are disposed of through public auctions, disposed of according to Oregon statute, or retained for forfeiture.

The evidence custodian also responded on location to several cases this year, to provide on-scene assistance during execution of search warrants. This allows for direct chain of custody of evidence and speeds the processing at the crime scene.

Drug Take Back Program

2012 marked another successful year with our Drug Take Back program. Residents are able to bring unused, unwanted, outdated or unknown over the counter and prescription drugs to the department for safe disposal. We implemented this program in June 2010 at the Jim Bean Safety Fair and took in 36 pounds of medications for destruction. We continue to have residents drop off their medications to the department. Generous donations allowed us to place a receptacle in our lobby for residents to deposit their medications 24 hours a day. We collected 193 pounds of medications in 2012.

The medications are taken by the evidence custodian to a facility in Brooks, Oregon for destruction by incineration.



Youth Services



PEER COURT

The Sweet Home Peer Court Program is an opportunity for first or second time juvenile offenders to avoid formal prosecution by appearing before a court of their peers. The program uses Restorative Justice Principles and offers Peer Court Diversion and Sanctions to juveniles who admit their guilt. The Linn County program was in full swing in 2007; however, lack of County funding soon ended Peer Court in Sweet Home. Chief Burford saw the positive results of Peer Court and reestablished a local Sweet Home Peer Court in the Fall of 2009.

Sweet Home Peer Court handled 42 cases in the 2011-2012 session. Student volunteers assessed Community Service and Sweet Home PD Work Crew in two-thirds of those cases processed. This resulted in 53 hours of Community Payback Service and 14 hours of SHPD Work Crew. Some of the projects included; spreading bark dust, pulling weeds and picking up trash and cigarette butts in downtown. Peer Court currently has 9 dedicated Junior High and High School student volunteers. Of the current student volunteers, 4 came through Peer Court themselves and decided to remain as an active volunteer once their sanctions were complete. Their duties include, Judge, Presenter, Court Clerk, Bailiff and Juror.



JUVENILE WORK CREW

The duties of the work crews continue to expand. Work crews have started to work with several area groups to assist with brush clearing and ground preparation for beatification projects.



Peer Court expanded its sanctioning abilities and utilized the offering of SHPD Work Crew versus Community Service. Jurors make the decision as to which type of service would be better for the youth and be a better deterrent. Youth do local projects as sanctioned by Peer Court. A youth can be sanctioned to a maximum of 16 hours work crew. When parents are asked their opinion whether their child should receive community service or work crew—most opted for work crew.



Community Events

Summer Programs



School Tours



Jim Bean Safety Fair

Special Olympics Polar Plunge



Boys & Girls Club Family Night



Shop With a Cop Program



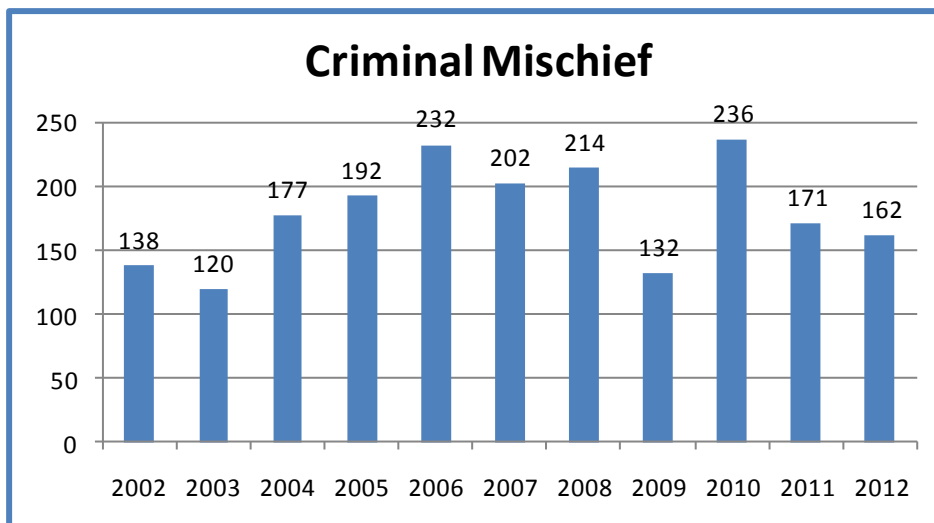
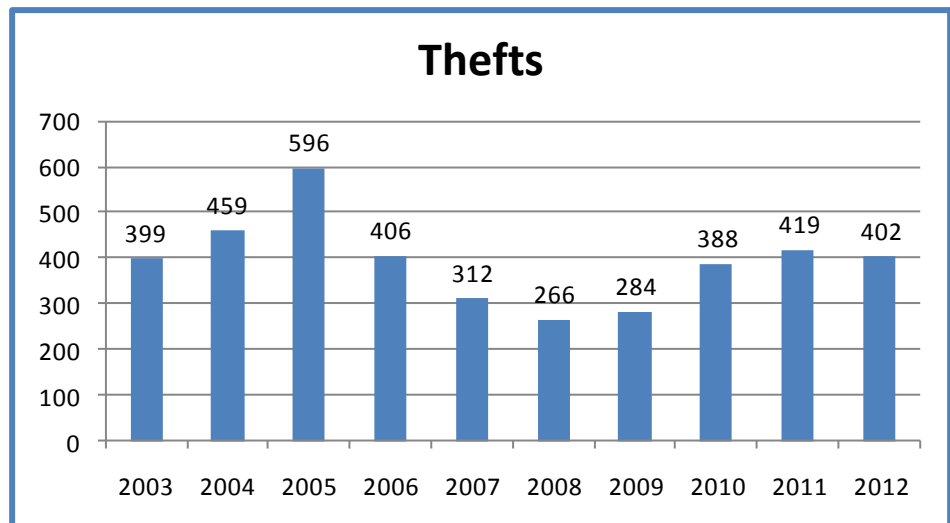
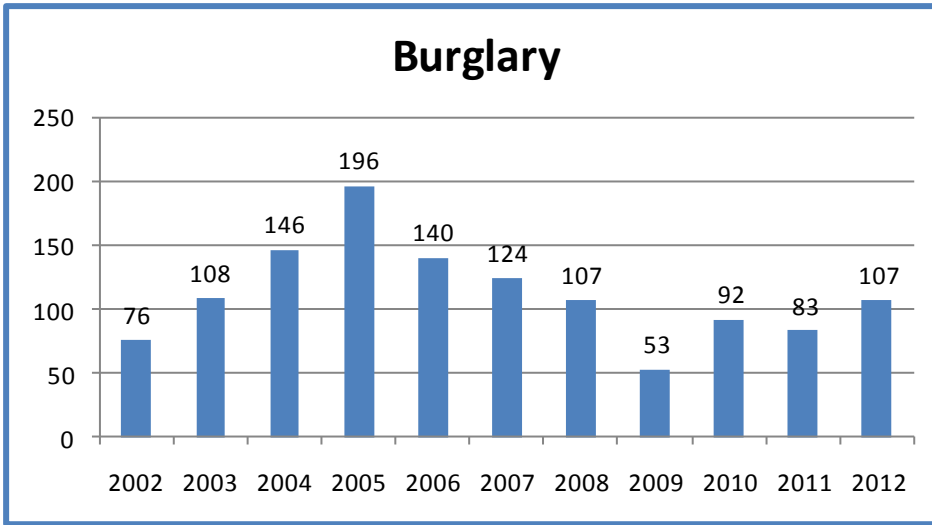
Down Town Trick or Treating



Santa Blue & Teen Sharing Tree

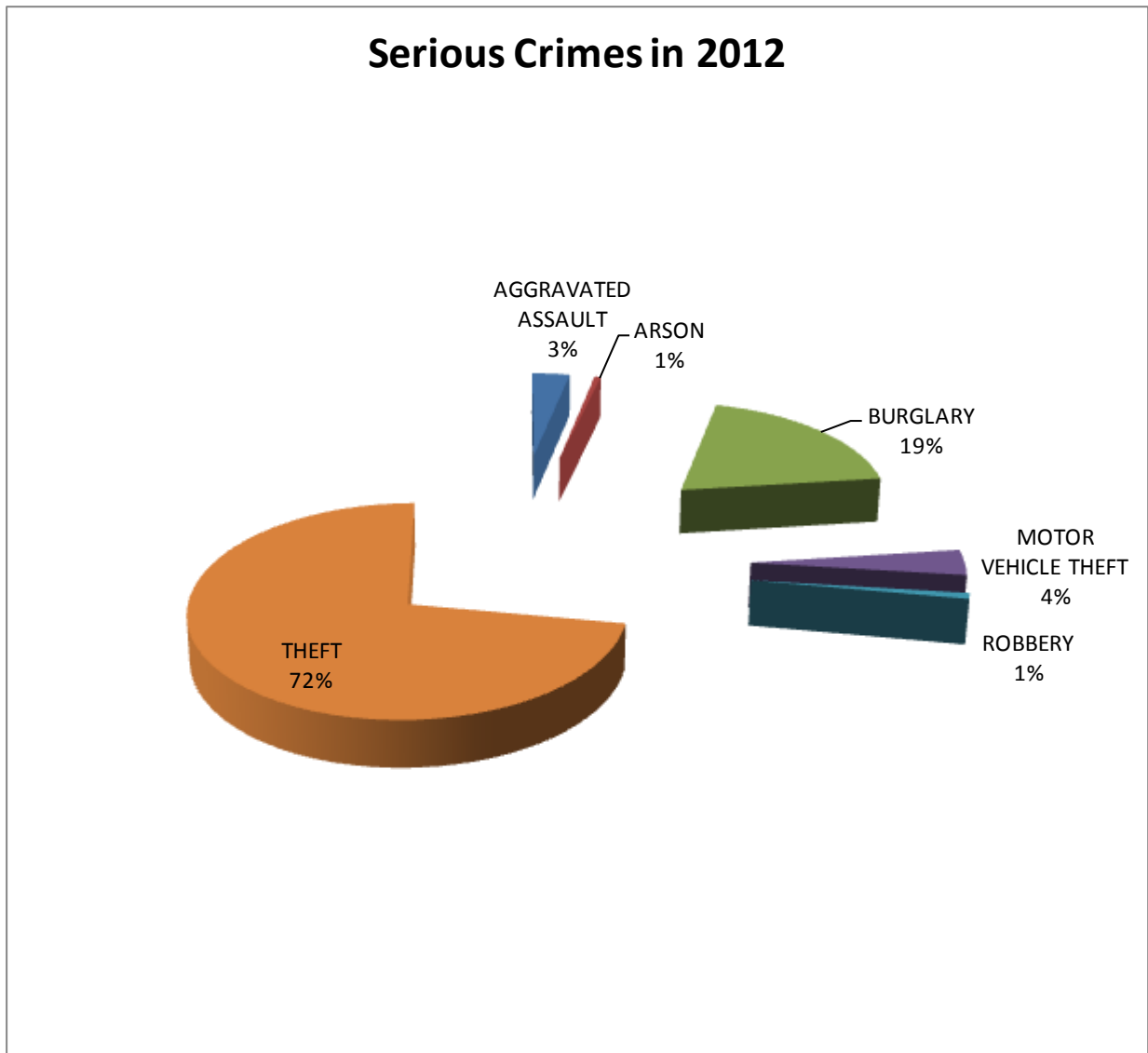
Statistics

Burglary, theft and criminal mischief continue to be among the highest reported crimes in our community.

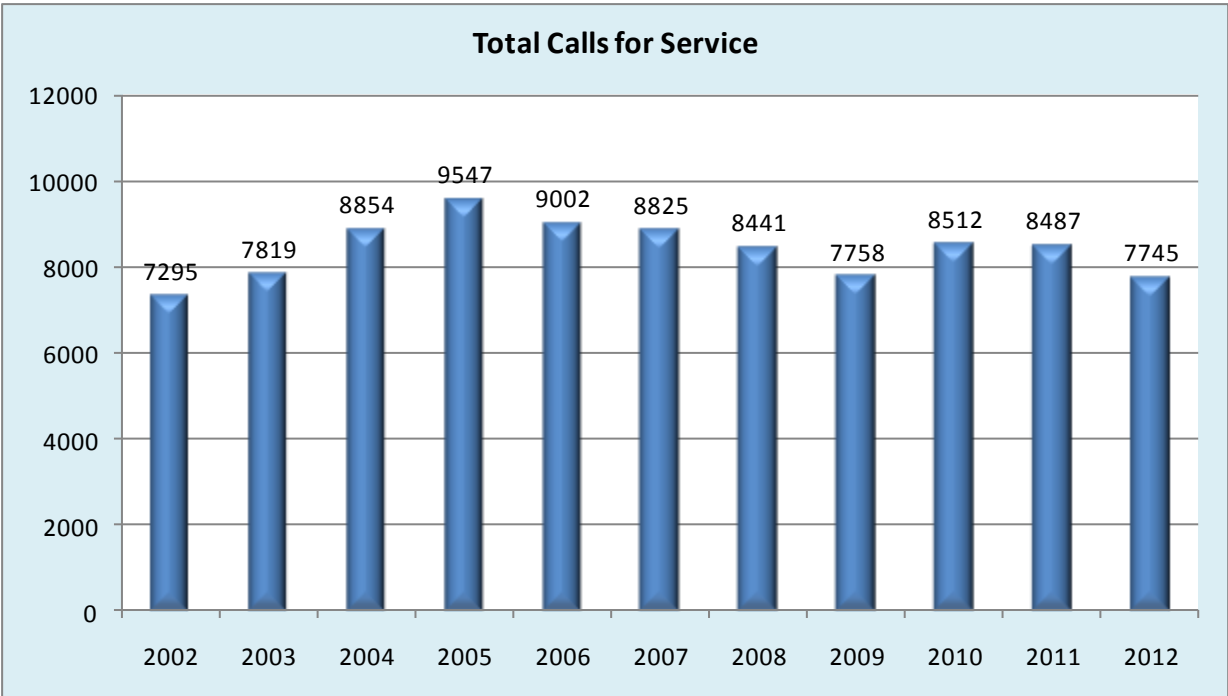
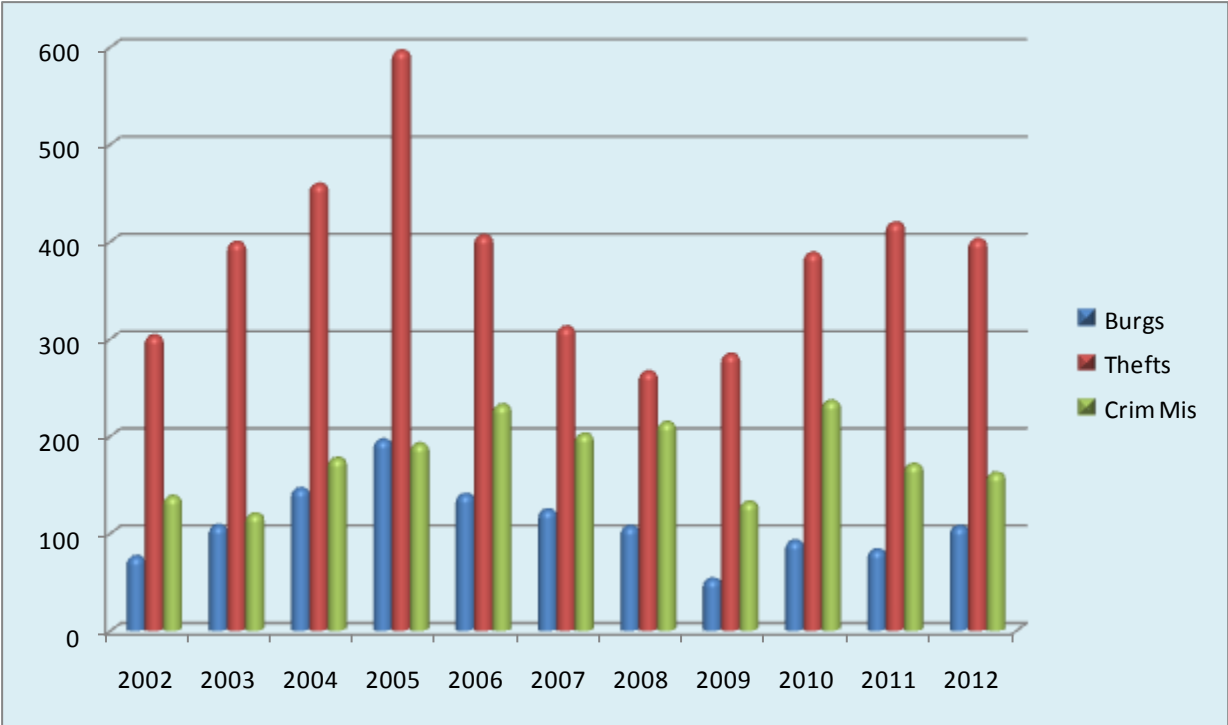


Statistical Data

An overview of crimes considered high profile and time consuming. As shown by the chart below, it is quite easy to see where officers and detectives spend many investigative hours.



10 Year Overview



Statistical Data

PART I CRIMES REPORTED	2012	2011
AGGRAVATED ASSAULT	18	10
ARSON	3	2
BURGLARY	107	83
FORCIBLE RAPE	2	0
MOTOR VEHICLE THEFT	22	18
MURDER	0	2
MURDER ATTEMPT	0	0
ROBBERY	5	4
THEFT	402	419

	<u>2012</u>	<u>2011</u>
TOTAL PART I CRIMES REPORTED	559	538
TOTAL PART I CRIMES CLEARED	147	127

Statistical Data

PART II CRIMES REPORTED	2012	2011
ANIMAL OFFENSE	64	41
CRIMINAL MISCHIEF	162	171
CRIMINAL THREAT	13	5
CURFEW	22	46
DISORDERLY CONDUCT	70	92
DRIVE UNDER INFLUENCE OF INTOXICANTS	22	35
DRUG OFFENSE	54	143
EMBEZZLEMENT	0	0
ESCAPE	4	5
FAMILY OFFENSE	17	19
FORGERY	15	3
FRAUD	36	27
KIDNAP	0	1
LIQUOR OFFENSE	19	48
LITTERING OFFENSE	0	1
OTHER (Ordinance Violations, Tobacco Offenses, etc)	345	428
POLICE OFFICER ASSAULT	2	1
PROTECTIVE CUSTODY	48	36
RECOVER STOLEN PROPERTY FOR OTHER AGENCY	1	1
RECOVER STOLEN VEHICLE FOR OTHER AGENCY	2	2
RUNAWAY	73	65
SEX OFFENSE	29	40
SIMPLE ASSAULT	96	101
TRAFFIC OFFENSE	24	62
TRESPASS	126	133
WARRANT ARRESTS	420	395
WEAPON OFFENSE	6	18

	2012	2011
TOTAL PART II CRIMES REPORTED	1670	1919
TOTAL PART II CRIMES CLEARED	1261	1193

Statistical Data

PART III CRIMES REPORTED	2012	2011
AGENCY ASSIST	556	649
ALARM	212	240
AMBULANCE ASSIST	79	92
ANIMAL	187	227
BACKGROUND	24	28
CIVIL	102	119
DEATH INV	26	24
DISTURBANCE	401	427
DOMESTIC (NON CRIMINAL)	269	238
DRUG INFORMATION	43	35
FINGERPRINTS	187	208
FIRE ASSIST	29	33
FIREWORKS COMPLAINTS	45	45
HAZARD	44	64
IMPOUND	34	62
INFORMATION	422	509
JUVENILE	260	276
LICENSING	28	45
MENTAL	47	46
MISSING PERSON	11	19
MOTOR VEHICLE CRASH	82	75
PROPERTY	182	289
PROWLER	23	39
PUBLIC ASSIST	367	556
REGISTRATION(ALARM & BICYCLE)	257	277
REGISTRATION(SEX OFFENDER)	139	124
SUICIDE ATTEMPT	12	8
SUSPICIOUS ACTIVITY	1069	1062
TRAFFIC	380	446
TRANSPORT	20	21
UNSECURE PREMISE	27	31
WARRANT ISSUED	142	116

	2012	2011
TOTAL PART III CRIMES REPORTED	5706	6430

Statistical Data

ARRESTS	2012	2011
ANIMAL OFFENSE	5	4
ARSON	4	1
ASSAULT AGGRAVATED	18	10
ASSAULT SIMPLE	77	80
BURGLARY	13	11
CRIMINAL MISCHIEF	34	57
CURFEW	28	46
DISORDERLY CONDUCT	43	100
DRIVE UNDER INFLUENCE OF INTOXICANTS	22	36
DRUG OFFENSE	80	137
EMBEZZLEMENT	0	0
ESCAPE	0	6
FAMILY OFFENSE	5	9
FORCIBLE RAPE	2	0
FORGERY	10	1
FRAUD	3	5
KIDNAP	0	1
LITTERING	0	1
LIQUOR OFFENSE	24	32
MOTOR VEHICLE THEFT	8	4
MURDER	0	2
MURDER ATTEMPT	0	0
OTHER(Ordinance Violations, Tobacco Offense, Etc)	103	87
PROTECTIVE CUSTODY	48	43
ROBBERY	2	7
RUNAWAY	64	62
SEX OFFENSE	53	29
THEFT	89	154
TRAFFIC OFFENSE	24	62
TRESPASS	28	55
WARRANT ARRESTS	420	395
WEAPON OFFENSE	11	21

	2012	2011
TOTAL ARREST CHARGES	1218	1458
TOTAL ADULT CHARGES	992	1160
TOTAL JUVENILE CHARGES	226	298
TOTAL PERSONS ARRESTED	618	848
TOTAL ADULTS ARRESTED	464	646
TOTAL JUVENILES ARRESTED	154	202

Statistical Data

CITATIONS	2012	2011
Chapter 803 Vehicle Title and Registration (Fail to Register Vehicle, Fail to Renew Registration, Altered Plate, Switched Plates, Fail to Display Plate, etc.)	20	19
Chapter 806 Financial Responsibility Law (Driving Uninsured, Fail to Carry Proof of Insurance, False Info Regarding Liability Insurance, etc.)	145	199
Chapter 807 Driving Privileges, Licenses and Permits (No Operator License, Fail to Carry and Present License, Fail to Change Name and/or Address on Operator License, etc.)	40	70
Chapter 811 Rules of the Road for Drivers (Violating Speed Limit, DWS, Reckless Driving, Careless Driving, Hit and Run, Fail to Obey Traffic Control Device, Follow too Close, Illegal Parking, Fail to Yield to Pedestrian, Fail to Wear Seatbelt, etc.)	310	608
Chapter 813 Driving Under Influence of Intoxicants (Drive Under Influence of Intoxicants, Refuse the Breath Test, etc.)	22	37
Chapter 814 Pedestrians; Passengers; Livestock; Motorized Wheelchairs; Vehicles with Fewer Than Four Wheels (Improper Use of Lanes, No Motorcycle Helmet, Bicyclist failing to Signal, etc)	6	5
Chapter 815 Vehicle Equipment Generally (Improper Fenders or Mud Guards, Unreasonable Noise, Obstructed Vehicle Windows, etc.)	0	7
Chapter 816 Vehicle Equipment: Lights (Operate Without Lighting Equipment, Operate Without Tail Lights, etc)	3	4
Chapter 818 Vehicle Limits (Operating with Sifting or Leaking Load, Dragging Objects on Highway, etc)	0	1

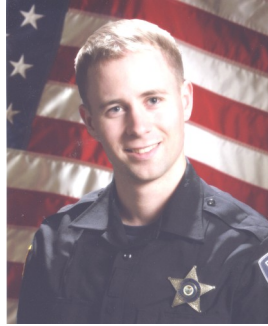
	2012	2011
TOTAL CITATIONS ISSUED	546	950
TOTAL PERSONS CITED	419	789
TOTAL WARNINGS ISSUED	1156	1401
TOTAL TRAFFIC STOPS	1575	2202

Statistical Data

MISCELLANEOUS INFORMATION	2012	2011
POLICE COMPLAINTS ISSUED	7764	8505
COMPUTER AIDED DISPATCH CALLS GENERATED	13434	14828
FIELD INTERVIEWS	93	181
PUBLIC TOURS & TALKS	43	36
PROPERTY LOSS	\$302,424	\$283,986
PROPERTY RECOVERED	\$22,616	\$51,381
TOTAL MILES DRIVEN	130981	148833
SICK TIME HOURS TAKEN	1596.5	2270
COMPENSATORY TIME HOURS TAKEN	210	266
VACATION TIME HOURS TAKEN	2139	2598
COMPASSIONATE LEAVE HOURS TAKEN	0	19
HOLIDAY HOURS TAKEN	528	528
ADMINISTRATIVE LEAVE HOURS TAKEN	40	40
NUMBER OF PERSONNEL ILL	88	97
MAN DAYS LOST DUE TO ILLNESS	149.25	243
NUMBER OF PERSONNEL INJURED	2	2
MAN DAYS LOST DUE TO INJURY	0	30

New Hires

Matt Johnson
January 23, 2012



David Hickcox
February 13, 2012



Rocky Hanni
January 23, 2012



Geoff Hamlin
August 1, 2012

Retirement



Rex Bostrom

After 20.5 years with the department as a Police Officer, Rex decided it was time for him to go and enjoy the great outdoors.

Service:

December 20, 1991— August 9, 2012

Commendations & Special Awards

Commendations

Officer Timothy Trahan

Officer Rocky Hanni

Officer Brian Stevens

Sergeant Jeff Lynn



Employee of the Year
Officer Chris Wingo



SHPD Tenure

As of 12/31/12

Years of Service	Name	Rank
31.7	Penny Leland	Commander/Communications Supervisor
26.3	Robert Burford	Chief of Police
25.5	Teresa Groshong	Dispatcher/Records Division
19.5	Jason Vaneck	Police Officer/Sergeant
14.5	Jason Ogden	Police Officer/Detective
13.8	Cyndi Pichardo	Dispatcher/Police Officer/Detective
13.5	Jeff Lynn	Police Officer/Sergeant
11.7	Nancy Rasor	Facility Maintenance
10.0	Ryan Cummings	Police Officer
8.5	Brian Stevens	Police Officer
8.4	Timothy Trahan	Police Officer
6.4	Karen Orr	Dispatcher
5.9	Brian Hawes	Dispatcher
5.7	Stephanie Borello	Dispatcher
5.3	Ryan Paul	Police Officer
5.3	Chris Wingo	Police Officer
3.8	Gina Riley	Community Services Officer
2.6	Katie Lyon	Dispatcher
0.9	Matthew Johnson	Police Officer
0.9	Rocky Hanni	Police Officer
0.9	David Hickcox	Police Officer
0.4	Geoffrey Hamlin	Police Officer

