



Honor ~ Integrity ~ Service

SWEET HOME POLICE DEPARTMENT



2017 Annual Report

Table of Contents

SWEET HOME POLICE DEPARTMENT 2017 ANNUAL REPORT

Table of Contents	2
Mission Statement	3
Message from the Chief of Police	4-5
Organizational Chart	6
Personnel	7
Awards - Promotions	8
Retirements - New Staff - New Positions	8
Code Enforcement	9
School Safety	10
Detective Unit	11
SHPD Explorer Program	12
Peer Court - Prescription Take Back Program	13
SHPD Volunteers (VIPS)	14
Community Events	15
Calls For Service	16-17
Violent Crimes	18
Property Crimes	19
Arrests	20
Acknowledgements	21

Mission Statement

To work in Partnership with our Community, to Protect the public and Prevent crime while providing the highest quality police services to all.

Motto:

Honor ~ Integrity ~ Service

Message from the Chief

February 5, 2018

To the City Council and to the citizens of Sweet Home:

On behalf of the Sweet Home Police Department, I am pleased to present our Annual Report for 2017. As in years past, our hope is that this report can serve as a resource for elected officials and the people who live and work in our community. This annual report summarizes programs and accomplishments for 2017. The Sweet Home Police Department continues to provide exceptional services. Our goal is to work with our community to find solutions and solve problems with the intent of improving the quality of life for all city residents, businesses and visitors.



Policing remains a vastly complex profession. As the profession and landscape of law enforcement change, our commitment to community service will remain. This report provides you with a glance at our law enforcement practices, community outreach, internal workings, and accomplishments. As our Mission Statement indicates, the Sweet Home Police Department is committed working in partnership with our community, to protect the public and prevent crime while providing the highest quality police services to all. This report reflects their commitment to this complex work.

During 2017, the Sweet Home Police Department has worked towards improvement through several external review processes. In July the Department voluntarily participated in an Agency Review Program sponsored by the Oregon Association of Chiefs of Police. The goal of the ARP review is to provide the Department's Administrative staff with an additional management and leadership too. It provided a critical look at the organization through the eyes of peer professionals. The report should serve as a guide to identify areas that need strengthening and highlight positive and innovative programs and practices. Through this process, we gained valuable input, advice and an outside perspective on policing as it relates to our community and Department. That external review was followed by a Best Practices review and a Human Resources review which were conducted by the City's insurance provider, City, County Insurance Services (CIS). All of the reviews were conducted with the intent and purpose of improving the service that we provide.

2017 also saw the beginning of the Sweet Home Police Department's Narcotics Detection K9 program. Our K9, Gemma, will be a single purpose dog, meaning that it will not be a "Patrol K9" but rather training in for the sole purpose of detecting illegal narcotics. Gemma will be a three (3) odor detection dog and will be trained to detect Heroin, Methamphetamine and Cocaine. After careful consideration and collaboration with various other agencies, and due to the changing environment in Oregon, the Gemma will not be trained to detect marijuana. Now, with this in mind, Gemma could be trained with the fourth odor (marijuana) at a later time.

The intent of the K9 program is to be an additional tool that will be readily available to our community and our Department. This obviously isn't a solve all but hopefully can be another deterrent to illegal narcotics activity in our area. A well trained K9 combined with the correct handler can have high arrest

rates, seizure rates and detection rates. Gemma will be available and used during search warrants, traffic stops, building searches and public relations demonstrations.

Various levels of strategic planning have taken place at the Department. We have focused on four aspects in this planning effort. Those aspects include the Department's technology, communications, employee development, and policing philosophy. The planning is intended to go hand-in-hand with the above-mentioned review processes to act as a roadmap for the future of the Sweet Home Police Department.

As always, we welcome your comments and suggestions. Please feel free to call me at the office or contact me via e-mail at shpd@ci.sweet-home.or.us.

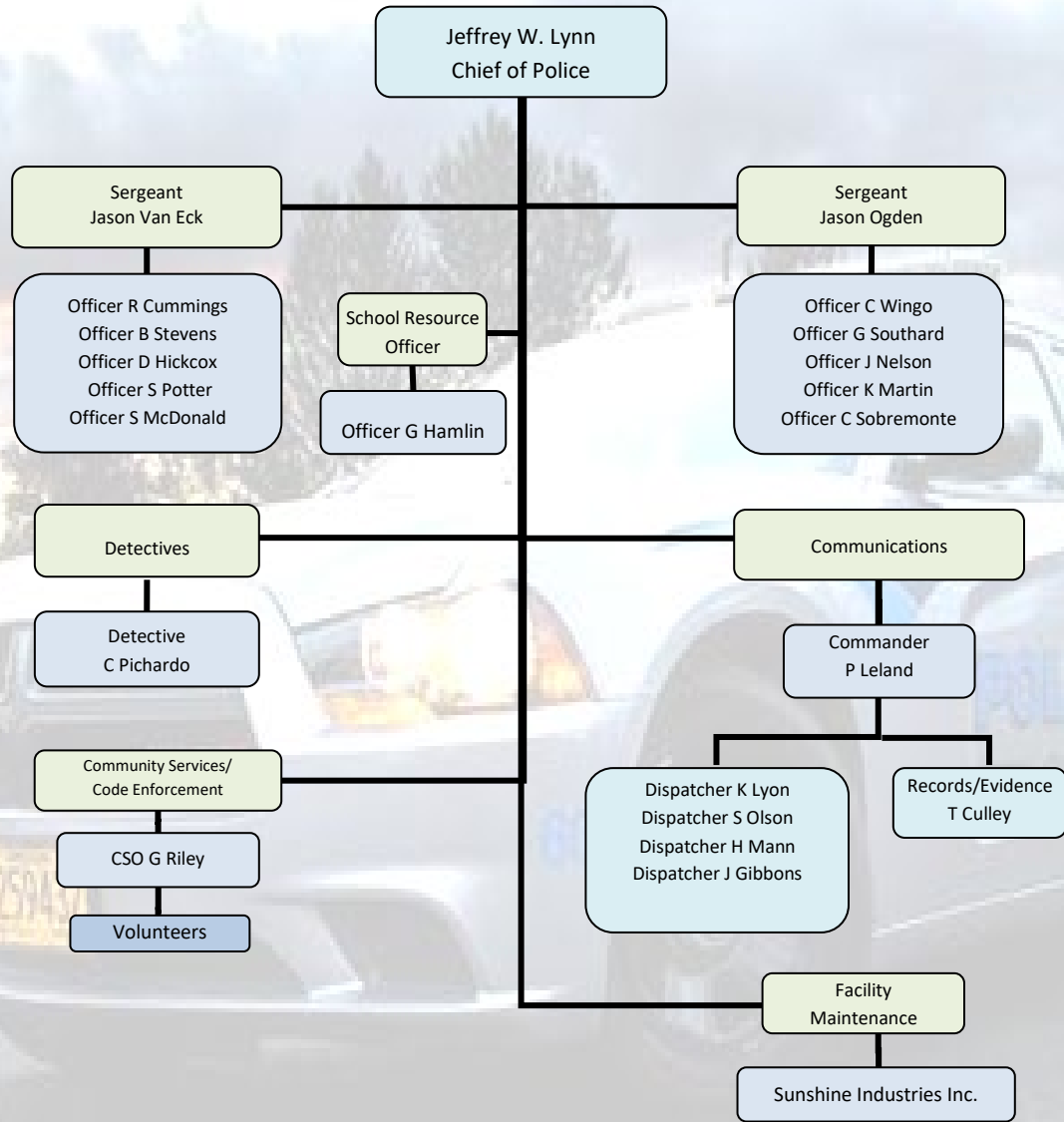
Sincerely,



Jeff W. Lynn
Chief of Police



Organizational Chart



Total Personnel		
	Authorized	Actual
Sworn	15	15
Civilian	6.5	7
Volunteers	10	19
Overall Total	31.5	42

Personnel

ADMINISTRATION	POSITION	SERVING YOU SINCE
Jeff Lynn	Chief of Police	1999
Jason Van Eck	Sergeant	1993
Jason Ogden	Sergeant	2003
Penny Leland	Commander	1981

INVESTIGATIONS		
Cyndi Pichardo	Detective	1999

PATROL		
Brian Stevens	Police Officer	2002
Ryan Cummings	Police Officer	2002
Chris Wingo	Police Officer	2007
David Hickcox	Police Officer	2012
Geoff Hamlin	Police Officer	2012
Gerrit Southard	Police Officer	2013
Sean Potter	Police Officer	2015
Sasha McDonald	Police Officer	2015
Jerred Nelson	Police Officer	2015
Keenan Martin	Police Officer	2016
Chris Sobremonte	Police Officer	2017
Sara Olson	Reserve Police Officer	2017
Gina Riley	Community Services Officer	2009

COMMUNICATIONS		
Katie Lyon	Dispatcher	2010
Sara Olson	Dispatcher	2014
Heather Mann	Dispatcher	2015
Josh Gibbons	Dispatcher	2016

RECORDS DIVISION		
Teresa Culley	Records Clerk/Property & Evidence	1987

FACILITY		
Sunshine Industries, Inc.	Facility Maintenance	2017

Awards

Employee of the Year



SRO Geoff Hamlin

Geoff is currently our SRO within the schools. He enjoys working with youth and has received praise from students and staff for his efforts. Geoff is very active in SHPD sponsored events.

Officer of the Year



Senior Officer Ryan Cummings

Ryan is dedicated to his profession. He is always eager to assist his fellow officers and local residents. He is admired as a training officer by his co-workers.

Telecommunicator of the Year



Dispatcher Sara Olson

Sara is committed to her profession and enjoys her work. She is a go getter and likes to keep herself busy. Sara also volunteers at most of the SHPD sponsored events.

New Employees



Officer Chris Sobremonte

Chris comes to this department with an extensive military background. He is currently at the DPSST Police Academy and is scheduled for graduation on February 16th. He will be a great asset to this team



Reserve Officer Sara Olson

Sara has been a Dispatcher with SHPD since 2014. She had a desire to improve her skills and assist her department. She became a Reserve Officer this year and hopes to continue her pursuit of helping local citizens.



K9 - Gemma

Gemma is the 1st canine to work for SHPD. She is assigned to Officer Sasha McDonald.

Code Enforcement

The mission of Code Enforcement is to enforce the codes of the city in order to protect the health, safety and welfare of the community; and, where violations occur, to work with our citizens to achieve compliance through an efficient and fair process.

The goals of Code Enforcement are to...

- Maintain an attractive, safe, and healthy environment in order to provide a high quality of life;
- Improve both the appearance and value of residential and business property;
- Provide prompt, courteous and professional service to the citizens of the City of Sweet Home;
- Encourage responsible property maintenance;
- Seek voluntary compliance with the provisions of the City Code; and
- Maintain open communications and continuing education with the community.
- While these goals may sound simple, cooperation and support from businesses, property owners and residents are necessary to make them attainable.

	2016	2017
CITY CODE VIOLATION-WEEDS,GRASS & BRUSH	117	80
CITY CODE VIOLATION-OPEN STORAGE	103	70
CITY CODE VIOLATION-ALL OTHER	57	61
CITY CODE VIOLATION-VEHICLES	52	43
CITY CODE VIOLATION-OCCUPY RV	40	41
CITY CODE VIOLATION-SIGNS	39	7
CITY CODE VIOLATION-ANIMAL	38	4
CITY CODE VIOLATION-TREES	12	4
CITY CODE VIOLATION-CLEAR VISION	2	1
	460	311



School Safety

The School Resource Officer (SRO) position is funded at a 50/50 level by the police department and the Sweet Home School District. The SRO serves approximately 2200 students at the high school, junior high, and four elementary schools in the district. The SRO is also available to assist the approximately 350 staff members as well as parents of all students in the district.



The SRO participates in several different community based groups including Sweet Home Youth Services Team, Sweet Home Student Threat Assessment Team, Sweet Home High School Safety Committee, Linn Benton Lincoln Regional Suicide Task Force, and Linn Benton Community College Threat Assessment Team.

This year the SRO attended several trainings to improve safety in the schools. The Salem-Keizer Threat Assessment training provides a process for the schools to follow and implement safety plans when a threat is made. This training was also attended by several school administrators and the process is currently being used by the school district. The FBI hosted Emerging Threats in Schools which discussed violent extremism in schools and reviewed several cases. National School Shield provided training to the SRO as a school assessor. School Assessments cover school security and safety by assessing building security, school policies and protocols, and daily activities. The process has been started at the Junior High and several recommendations have been made for the upcoming remodel. Assessments will be completed at all 6 schools in the future.

The SRO spends most of the day in the schools building positive relationships with the students. Many are familiar with him and greet him by name when at the schools. These relationships are built by casual contacts during recess, breaks, and lunch time. The SRO is often called by the schools to conduct counseling and education. The SRO is invited into the wellness classes at the high school where he provides education and gives the students the opportunity to experience the fatal vision goggles, which simulate the effects of intoxication.

Outside of the school setting, the SRO participated in the Shop with a Cop as well as the Law Enforcement Polar Plunge and the Tip-A-Cop events which are both designed to raise money for Special Olympics of Oregon. He also is the advisor for the Sweet Home Police Explorer Program.

Detective Unit

The Sweet Home Police Department currently has ONE detective assigned who specializes in the investigation of felony drug crimes, burglary, auto theft and person crime cases. In addition to the normal caseload the detective is assigned, she participates in several multi agency groups such as the Child Abuse Disciplinary Team, Major Crimes Team, Linn County Drug Task Force and Linn County Use of Force Team. Some of the groups are mandated by Oregon law.

The epidemic of drug addiction and the lifestyle associated with it has a far reaching impact on the citizens of the community such as run down houses in otherwise family based neighborhoods. Users and dealers will sometimes hang out in local parks seeking new clientele making families that would normally enjoy a day in the park feel unwelcome. Detective Pichardo frequently partners with local Linn County area law enforcement agencies to have a greater impact and enforcement on both drug users and street level dealers in the Sweet Home area.

Property crime offenders are often addicted to a controlled substance such as methamphetamine, heroin, pills and other illicit substances which prompts them to commit other crimes that will financially support and sustain their drug habit. These same offenders are frequently tied to criminal activity such as identity theft and fraud. Most of these offenders are closely associated with one another. Although Heroin addiction amongst young adults 25 years old and under is on a startling rise, methamphetamine is still the most frequently encountered illicit substance.

The Sweet Home Police Department assisted with 9 drug related search warrants in 2017, prepared and/or served 17 drug related search warrants in 2016, 18 drug and/or property crime related search warrants in 2015. This number was up from the 7 that were served in 2014. The drugs that were seized at these search warrants included: methamphetamine, heroin, marijuana extract, cash, stolen property and prescription pills.

Detective Pichardo also regularly participates in community forums and events to help educate the public on Identity Theft, Online Safety and Drug Awareness.



SHPD Explorer Program

The Sweet Home Police Explorer program is designed for youth ages 14-20 to participate as a volunteer with their local police department. The program provides law enforcement training both in a classroom and ride-along setting for youth interested in a career in police work. The Explorers also participate in community events throughout the year.

The Explorer program currently has three Explorers ranging from high school to college age. They participated in several community events including the annual safety fair, Tip-a-Cop, Shop with a Cop, and the Harvest Festival. They assisted with traffic control during the Sportsman's Festival parade.

The Explorers are required to be enrolled in school and maintain a minimum GPA. They earn ride along hours by participating in monthly trainings as well as the community events. The program requires that they be self-disciplined and responsible teenagers and young adults. The program is an opportunity for them to give back to their community and learn valuable skills for a future in law enforcement.



City of Sweet Home Harvest Festival – October 2017

Peer Court



The Sweet Home Peer Court Program is an opportunity for first or second time juvenile offenders to avoid formal prosecution by appearing before a court of their peers.

Sweet Home Peer Court handled 33 cases in the 2016-2017 school year. Student volunteers assessed Community Service or Sweet Home PD Work Crew in 80% of those cases processed.

This resulted in 60 hours of

Community Payback Service (CPS). CPS has to be done at a local non-profit organization or helping an elderly person with tasks. Most of the cases heard have been Curfew Violations and Runaway Reports. Peer Court currently has 4 Junior High and High School student volunteers and are seeking others to volunteer. Of the current student volunteers, 1 came through Peer Court themselves and decided to remain as an active volunteer once their sanctions were complete. Their duties include, Judge, Presenter, Court Clerk, Bailiff and Juror.



Juvenile Cases Heard in Peer Court				
2016-17	2015-16	2014-15	2013-14	2012-13
33	6	19	22	50

Prescription Drug Take Back

In 2017, our department continued its efforts to collect and dispose of unused/unwanted prescription medications. We again participated in the National DEA Take Back program and a total of 10 boxes were collected as a result of having a convenient disposal drop box available to the public. Each of these boxes averaged 40 pounds in weight for a total of approximately 413 pound of unused/unwanted medications that were safely destroyed.



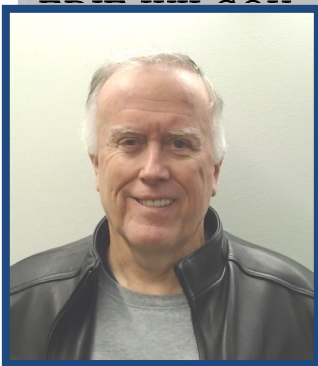
SHPD Volunteers

The Sweet Home Police Department started a volunteer program in 2014. We modeled our program after the National VIPS (Volunteers in Police Service) program. We currently have 20 volunteers of which at least 18 are active every month. Some of the responsibilities and details they were involved with in 2017:

- Child Abuse & Awareness Month
- Jim Bean Memorial Safety Fair
- National Night Out
- Speed Monitoring Program
- Down Town Trick or Treating
- Office Assistance
- Santa Blue Sharing Tree
- Tip a Cop
- Shop With a Cop
- Radar Trailer Placement
- Steak Out with SHPD
- Neighborhood Watch Newsletter
- LETR Polar Plunge
- SHPD & SHFD Awards Banquet



SHPD 2017 VOLUNTEER OF THE YEAR



Frank Gallagher

Dedicated!! That is the word that comes to mind when you hear the word "Frank." He logged in 87 volunteer hours in 2017. He is a got to guy and always willing to help out! Whether it's setting up the Radar Trailer, power washing the PD building, repairing our dog kennel, handing out Pinwheels to kids, handing out candy for Trick or Treats or being McGruff the Crime Fighting Dog at our events... Frank is ready and willing!!!

THANK YOU FRANK!



Community Events



Special Olympics Polar Plunge Team
(Most \$ donated and Largest Team)



Safety Fair



Law Enforcement Torch Run Team ~ 1st Leg



Downtown Trick or Treating



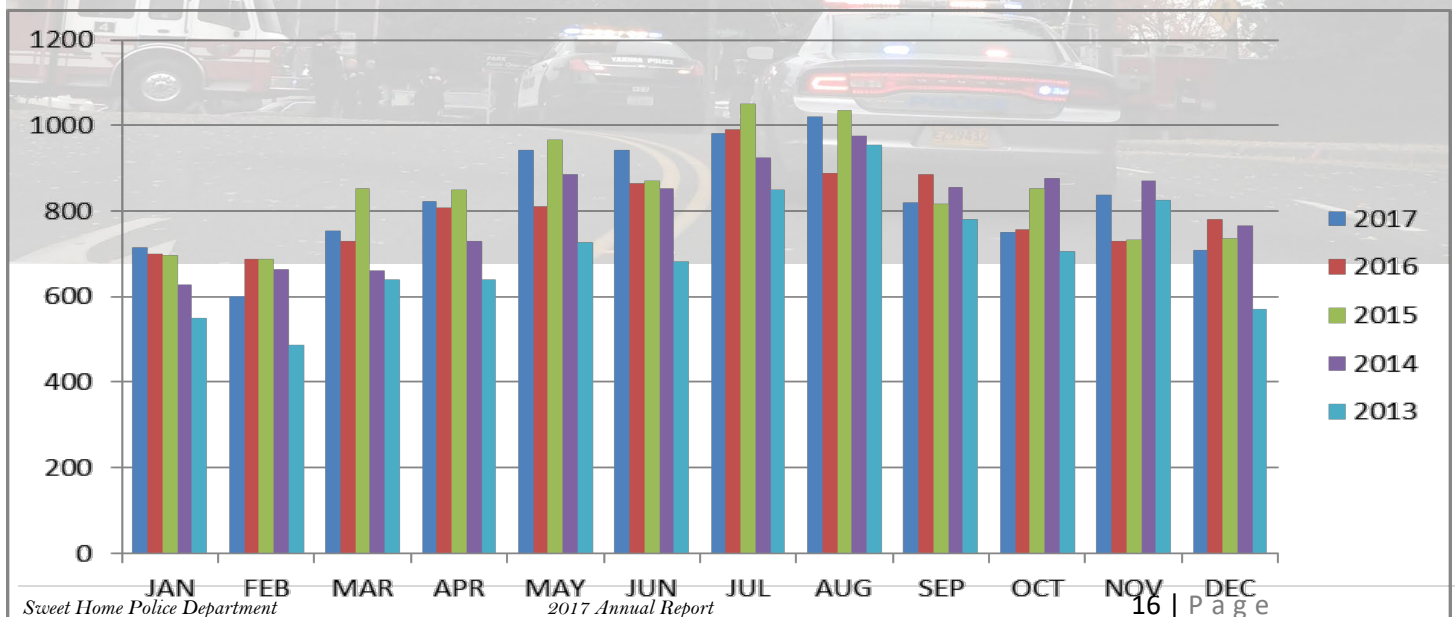
~~ Shop with a Cop ~~



Calls for Service

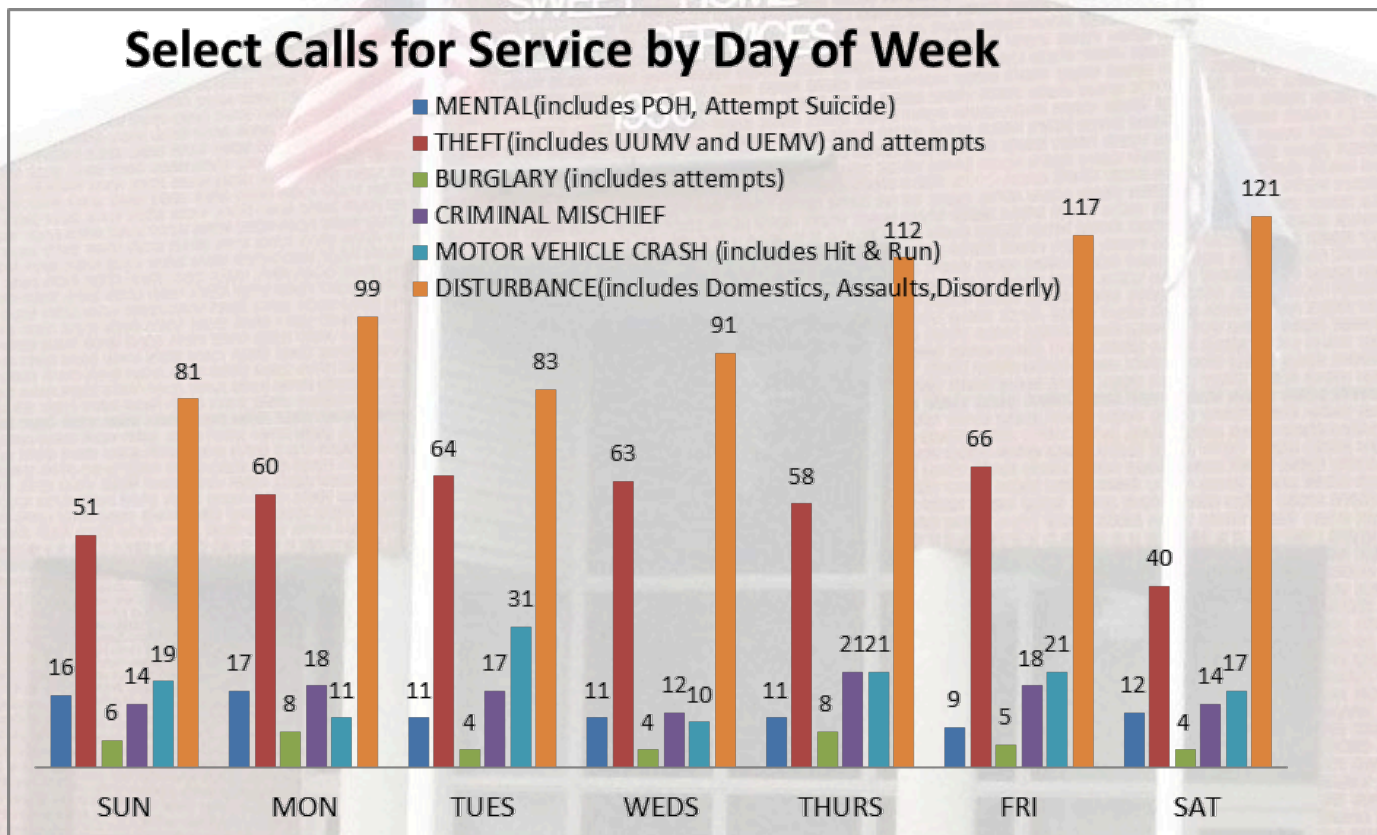
The following charts and graphs indicate how calls for service vary by month for the past five years.

CALLS FOR SERVICE BY MONTH						
	2017	2016	2015	2014	2013	Average
JAN	715	699	697	628	549	658
FEB	602	689	689	664	486	626
MAR	755	730	852	660	641	728
APR	824	809	851	730	639	771
MAY	943	810	967	887	728	867
JUN	943	864	872	853	683	843
JUL	983	990	1051	924	850	960
AUG	1020	889	1036	976	954	975
SEP	820	887	816	855	780	832
OCT	751	757	854	877	707	789
NOV	837	729	733	871	826	799
DEC	710	782	737	765	571	713
TOTAL	9903	9635	10155	9690	8414	



Calls for Service

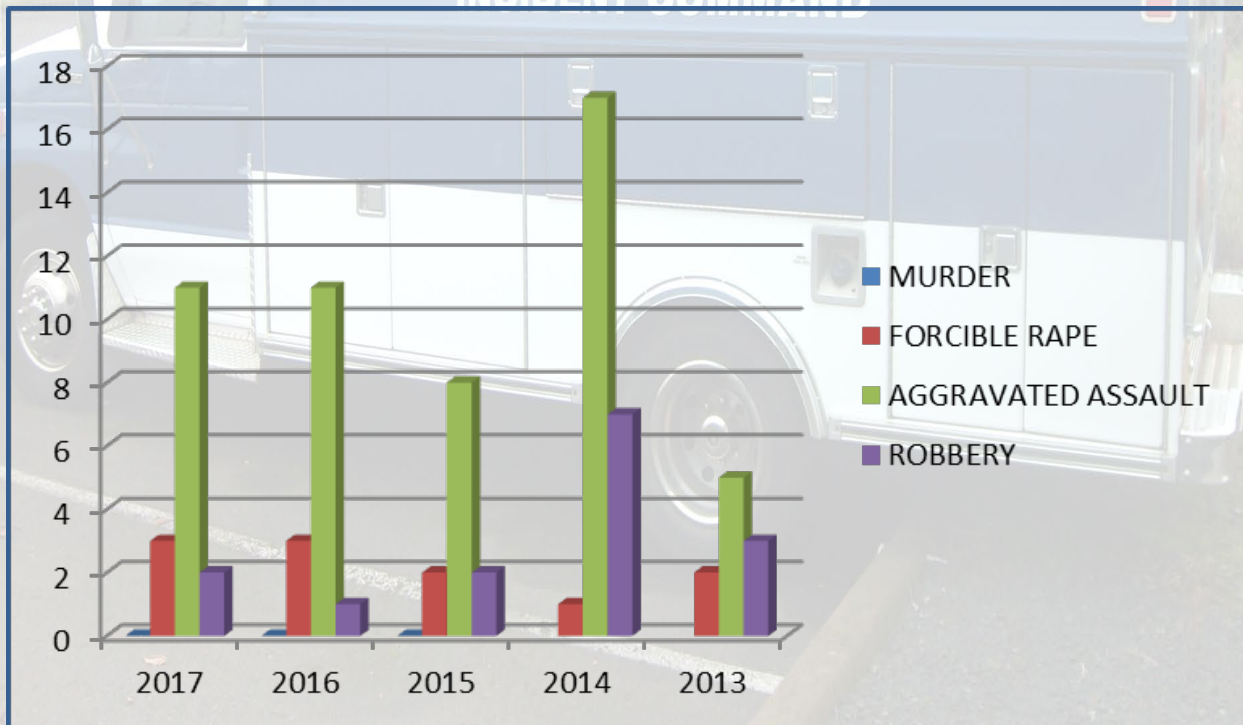
The following graph indicates how calls for service for select incidents vary by day of week in 2017.



Violent Crimes

The following tables provide the total number of Violent Crimes and Property Crimes reported in Sweet Home for the past five years.

VIOLENT CRIME - 5 YEAR TREND					
	2017	2016	2015	2014	2013
MURDER	1	1	0	0	0
FORCIBLE RAPE	3	3	2	1	2
AGGRAVATED ASSAULT	11	11	8	17	5
ROBBERY	2	1	2	7	3

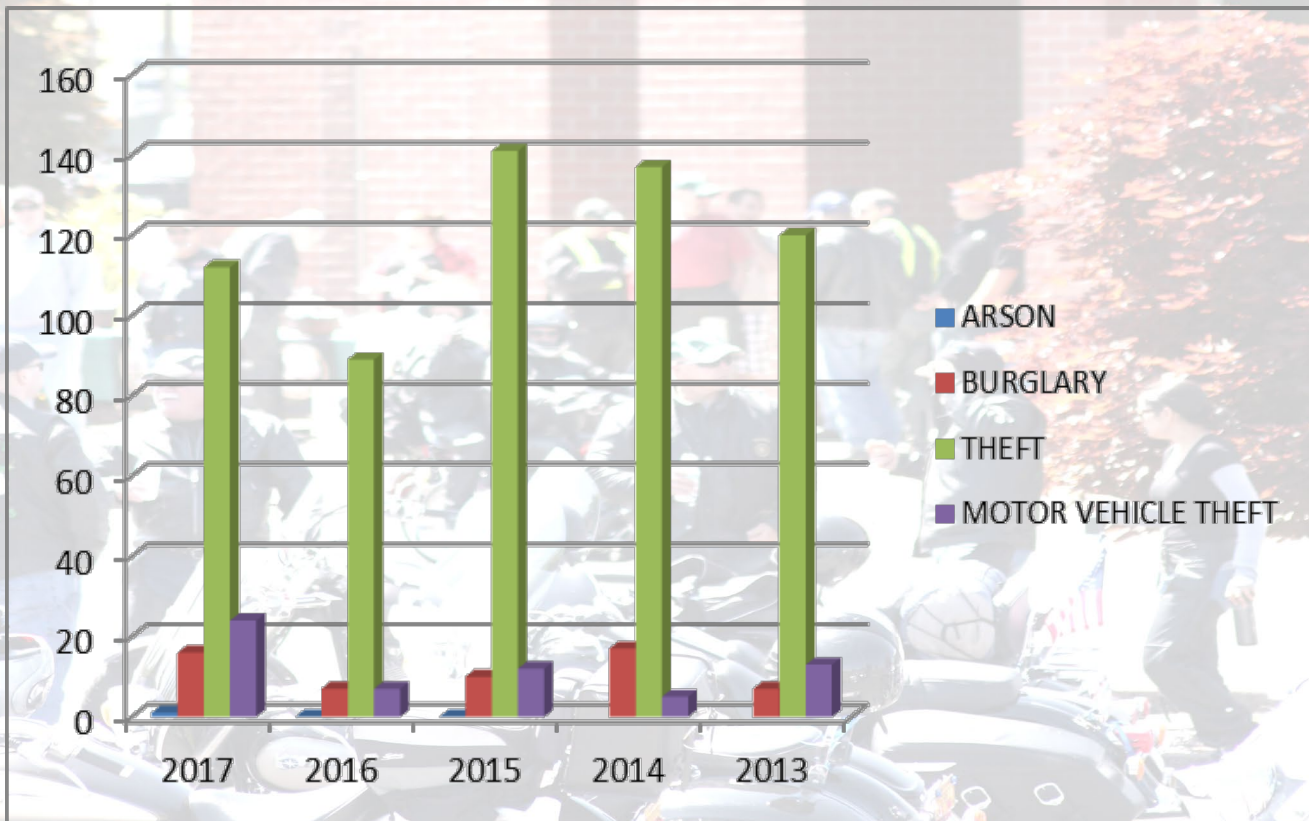


Property Crimes

The property crime index includes burglary, theft, motor vehicle theft, and arson. Theft is the most common crime in this index, accounting for more than eighty percent of all property crimes, including shoplifting, pocket-picking, purse-snatching, and theft from motor vehicles.

PROPERTY CRIME - 5 YEAR TREND					
	2017	2016	2015	2014	2013
ARSON	1	3	1	0	0
BURGLARY	16	7	10	17	7
THEFT	112	89	141	137	120
MOTOR VEHICLE THEFT	24	7	12	5	13

OTHER PROPERTY CRIMES IN 2015	
FRAUD	8
TRESPASS	84



Arrests

ARRESTS	2017	2016	2015	2014	2013
ANIMAL OFFENSE	2	13	14	4	5
ARSON	1	3	1	0	0
ASSAULT AGGRAVATED	11	5	6	12	4
ASSAULT SIMPLE	62	73	55	45	70
BURGLARY	16	7	10	17	7
CRIMINAL MISCHIEF	38	54	33	66	31
CURFEW	15	8	23	17	50
DISORDERLY CONDUCT	98	39	45	33	53
DRIVE UNDER INFLUENCE OF INTOXICANTS	17	25	25	13	27
DRUG OFFENSE	113	96	129	103	81
EMBEZZLEMENT	0	0	0	0	0
ESCAPE	12	8	11	3	3
FAMILY OFFENSE	1	1	4	3	1
FORCIBLE RAPE	2	2	1	0	1
FORGERY	5	6	5	0	4
FRAUD	9	8	12	3	1
KIDNAP	3	0	2	0	1
LITTERING	7	0	6	0	0
LIQUOR OFFENSE	25	47	31	10	38
MOTOR VEHICLE THEFT	24	7	12	5	13
MURDER	1	0	0	0	0
MURDER ATTEMPT	0	0	0	0	0
OTHER(Ordinance Violations, Tobacco Offense, Etc)	35	105	90	92	81
PROTECTIVE CUSTODY	52	47	47	53	43
ROBBERY	0	2	2	6	1
RUNAWAY	96	46	54	25	47
SEX OFFENSE	3	7	15	5	11
THEFT	112	89	141	137	120
TRAFFIC OFFENSE	52	43	41	49	44
TRESPASS	68	84	65	62	58
WARRANT ARRESTS	895	926	957	802	522
WEAPON OFFENSE	14	16	13	11	10

Acknowledgements

The Sweet Home Police Department would like to thank the following for contributing to this report.

Contributors as follows:

Chief Jeff W. Lynn
SHPD Police Officers
Commander Penny Leland
Detective Cyndi Pichardo
Sergeant Jason Van Eck
Sergeant Jason Ogden
SRO Geoff Hamlin
CSO Gina Riley
Evidence Custodian Teresa Culley

Editor at Large ☺
CSO Gina Riley



For more information about the Sweet Home Police Department and the material in this report, please contact us at 541-367-5181, or visit our website at www.sweet-home.or.us

