

SOURCE WATER ASSESSMENT SUMMARY BROCHURE

CITY OF SWEET HOME - PWS # 4100851

WHAT IS A SOURCE WATER ASSESSMENT?

The Source Water Assessment was recently completed by the Department of Environmental Quality (DEQ) and the Oregon Health Division (OHD) to identify the surface areas (and/or subsurface areas) that supply water to Sweet Home's public water system intake and to inventory the potential contaminant sources that may impact the water supply.

WHY WAS IT COMPLETED?

The Source Water Assessment was completed to provide information so that Sweet Home's public water system staff/operator, consumers, and community citizens can begin developing strategies to protect the source of their drinking water, and to minimize future public expenditures for drinking water treatment. The assessment was prepared under the requirements and guidelines of the Federal Safe Drinking Water Act (SDWA).

WHAT AREAS ARE INCLUDED IN SWEET HOME'S PROTECTION AREA?

The drinking water for Sweet Home is supplied by an intake on the South Santiam River. This public water system serves approximately 7,235 citizens. The geographic area providing water to Sweet Home's intake (the drinking water protection area) extends upstream approximately 31.6 miles in an easterly direction and encompasses a total area of 563 square miles. The drinking water protection area includes the Hamilton Creek/South Santiam River, Quartzville Creek, Middle Santiam River, South Santiam River, South Santiam/Foster Reservoir, and Wiley Creek Watersheds of the South Santiam Sub-Basin of the Willamette Basin. The boundaries of the Drinking Water Protection Area are illustrated on the figure attached to this summary. Drinking water intakes for the City of Lebanon and City of Albany are also located within the South Santiam Sub-Basin, downstream of Sweet Home's intake. Activities and impacts in the Sweet Home drinking water protection area have the potential to also impact downstream users.

WHAT ARE THE POTENTIAL SOURCES OF CONTAMINATION TO SWEET HOME'S PUBLIC DRINKING WATER SUPPLY?

The primary intent of this inventory was to identify and locate significant potential contaminant sources (PCSs) to the drinking water supply. The upper portion of the

delineated drinking water protection area is primarily dominated by managed forest lands while the lower portions are primarily dominated by residential, commercial and agricultural land uses in the vicinity of Sweet Home and Foster. Because of the large size of the drinking water protection area and DEQ's limited resources, the inventory was limited to the lower portion of the watershed with limited review of US Forest Service maps conducted for areas above Foster Dam and along Wiley Creek. The high to moderate risk PCSs identified include automotive and equipment service/repair stations, dry cleaners, hardware/parts stores, wood processing facilities, parking lots, the municipal treatment plants, parks/sports fields, the airport, several underground storage tanks, high-density residential areas, managed forest lands, recreation areas, the dams and powerhouse operations, and the transportation corridors. This provides a quick look at the existing potential sources of contamination that could, if improperly managed or released, impact the water quality in the watershed.

WHAT ARE THE RISKS FOR OUR SYSTEM?

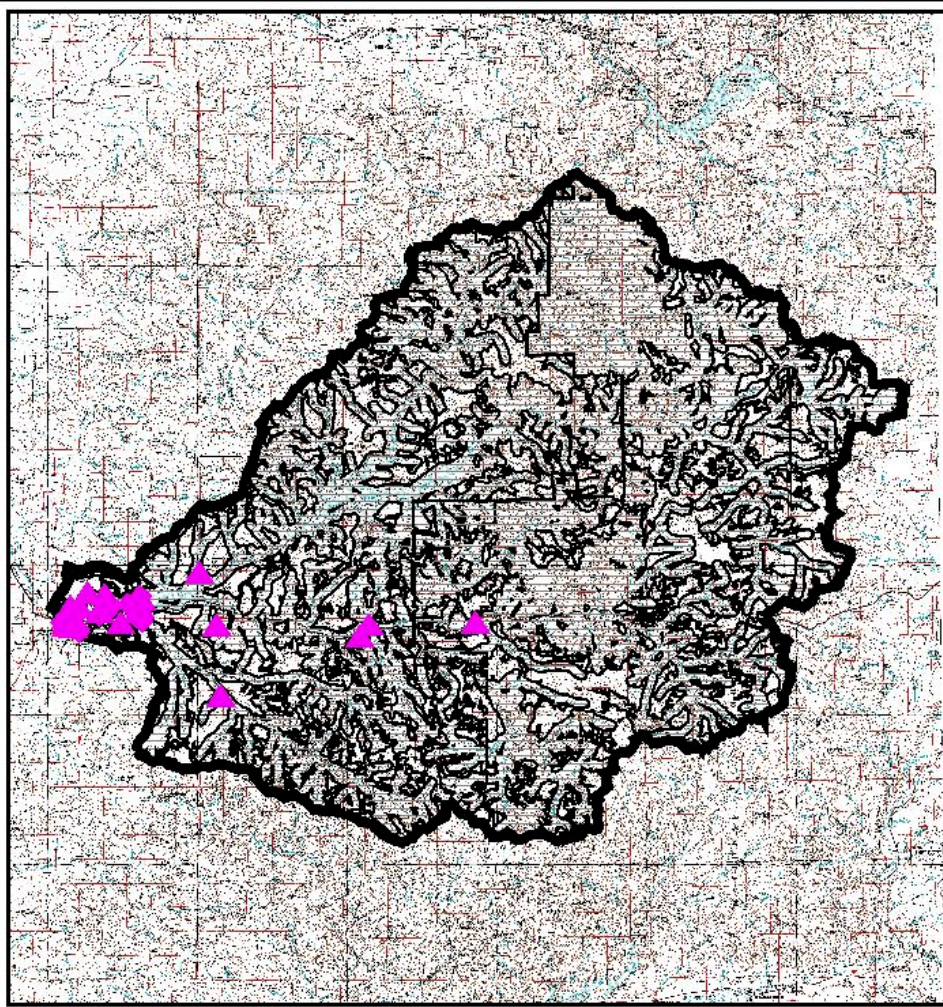
A total of 52 potential contaminant sources were identified Sweet Home's drinking water protection area. All of these are located in the "sensitive areas" and 40 are high- to moderate-risk sources within "sensitive areas". The sensitive areas within the Sweet Home drinking water protection area include areas with high soil permeability, high soil erosion potential, high runoff potential and areas within 1000' from the river/streams. The sensitive areas are those where the PCSs, if present, have a greater potential to impact the water supply. The information in this assessment provides a basis for prioritizing areas in and around our community that are most vulnerable to potential impacts and can be used by the Sweet Home community to develop a voluntary Drinking Water Protection Plan.

NEED MORE INFORMATION?

Sweet Home's Source Water Assessment Report provides additional details on the methodology and results of this assessment. The full report is available for review at:

Contact the City Public Works staff if you would like additional information on Sweet Home's Source Water Assessment results.

Source Water Assessment Results
City of Sweet Home's Drinking Water Protection Area with Sensitive Areas and Potential Contamination Sources
PWS 4100851



- Drinking Water Protection Area
- Drinking Water Intake - Surface Water
- Sensitive Areas
- Area Feature (see Note 2)
- Point Feature (see Note 2)

Notes on Potential Contaminant Sources

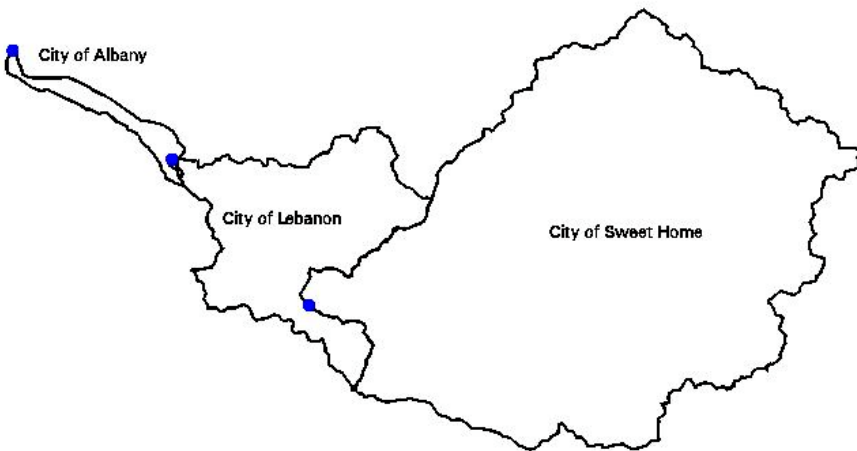
Note 1: Sites and areas noted in this Figure are potential sources of contamination to the drinking water identified by Oregon drinking water protection staff. Environmental contamination is not likely to occur when contaminants are used and managed properly.

Note 2: Feature identification markers correspond to the potential contaminant source numbers in the SWA Report. The area features represent the approximate area where the land use or activity occurs and is marked at the point closest to the intake. The point features represent the approximate point where the land use or activity occurs.



Attachment B

South Santiam River Watersheds



- Drinking Water Protection Area
- Drinking Water Intake - Surface Water

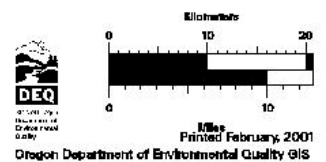


TABLE 2. INVENTORY RESULTS - LIST OF POTENTIAL CONTAMINANT SOURCES

PWS# 4100851 SWEET HOME, CITY OF

Reference No. (See Figure)	Potential Contaminant Source Type	Name	Approximate Location	City	Method for Listing	Proximity to Sensitive Areas	Relative Risk Level (1)	Potential Impacts	Comments
1	Drinking Water Treatment Plants	Sweet Home Drinking Water Treatment Plant	Adjacent to intake, 1730 N. 9th Ave.	Sweet	Database (2) Field-Observation Interview	Within sensitive	Moderate	Treatment chemicals and equipment maintenance materials may impact groundwater or surface water source.	
	UST - Status Unknown						Moderate	Spills, leaks, or improper handling of stored materials may impact the drinking water supply.	
2	Housing - High Density (> 1 House/0.5 acres)	High-Density Housing Area	Near Poplar and 9th Ave. - Near drinking water treatment plant	Sweet	Field-Observation	Within sensitive	Moderate	Improper use, storage, and disposal of household chemicals may impact the drinking water supply. Stormwater run-off or infiltration may carry contaminants to drinking water supply.	
3	Transportation - Railroads	Railroad Corridor	South of intake between Poplar and Nandina	Sweet	Field-Observation	Within sensitive	Higher	Rail transport elevates the risk for leaks/spills of fuel & other haz. materials. Installation/maintenance of tracks may increase erosion & slope failure causing turbidity. Over-application/improper handling of pesticides may impact the	
4	Transportation - Stream Crossing - Perennial	9th Avenue Crossing over Ames Creek	Just north of railroad line	Sweet	Field-Observation	Within sensitive	Higher	Road building, maintenance & use may increase erosion & slope failure causing turbidity. Vehicle use increases the risk of leaks or spills of fuel & other chemicals. Over-application/improper handling of pesticides in right-of-way may also impact	
5	RV/Mini Storage	Mini-Storage Facility	West side of 9th Ave, West of Nandina	Sweet	Field-Observation	Within sensitive	Lower	Spills, leaks, or improper handling of automotive fluids and other materials during transportation, storage and disposal may impact the drinking water supply.	

Note: Sites and areas identified in this Table are only potential sources of contamination to the drinking water. Environmental contamination is not likely to occur when contaminants are used and managed properly.

(1) Where multiple potential contaminant sources exist at a site, the highest level of risk is used.

(2) See Table 3 for database listings (if necessary).

TABLE 2. INVENTORY RESULTS - LIST OF POTENTIAL CONTAMINANT SOURCES

PWS# 4100851 SWEET HOME, CITY OF

Reference No. (See Figure)	Potential Contaminant Source Type	Name	Approximate Location	City	Method for Listing	Proximity to Sensitive Areas	Relative Risk Level (1)	Potential Impacts	Comments
6	RV/Mini Storage	Mini-Storage Facility	South side of Nandina between 9th and 12th Ave.	Sweet	Field-Observation	Within sensitive	Lower	Spills, leaks, or improper handling of automotive fluids and other materials during transportation, storage and disposal may impact the drinking water supply.	
7	Furniture/Lumber/P arts Stores	Santiam Supply - Carquest Auto and Truck Parts	Lot at NW corner of 12th Ave and Main Street (1118 Main Street)	Sweet	Database (2) Field- Observation	Within sensitive	Moderate	Spills, leaks, or improper handling of hazardous chemical products and other materials in inventory during transportation, use, storage and disposal may impact the drinking water supply.	
	Parking Lots/Malls (> 50 Spaces)						Higher	Spills and leaks of automotive fluids in parking lots may impact the drinking water supply.	
8	Historic Gas Stations	McKenzie Barber Shop - Possible historic gasoline station	SE Corner of Main and 12th Avenue (1209 Main)	Sweet	Field- Observation	Within sensitive	Higher	Historic spills, leaks, or improper handling of solvents and petroleum products may impact the drinking water supply. Abandoned underground storage tanks	
9	Automobiles - Car Washes	Sweet Home Car Wash	On north side of Main, north of 10th Ave	Sweet	Field- Observation	Within sensitive	Moderate	Improper management of vehicle wash water may result in soaps, oils, greases, and metals impacting the drinking water	
10	Apartments and Condominiums	Apartment Complex	South side of nandina between 9th and 12th Ave.	Sweet	Field- Observation	Within sensitive	Lower	Improper use, storage, and disposal of household and facility maintenance chemicals may impact the drinking water supply. Stormwater run-off or infiltration may carry contaminants to water supply.	
11	Furniture/Lumber/P arts Stores	Coast-to-Coast Hardware	Southwest corner of Main and 13th Ave.	Sweet	Field- Observation	Within sensitive	Moderate	Spills, leaks, or improper handling of hazardous chemical products and other materials in inventory during transportation, use, storage and disposal may impact the drinking water supply.	

Note: Sites and areas identified in this Table are only potential sources of contamination to the drinking water. Environmental contamination is not likely to occur when contaminants are used and managed properly.

(1) Where multiple potential contaminant sources exist at a site, the highest level of risk is used.

(2) See Table 3 for database listings (if necessary).

TABLE 2. INVENTORY RESULTS - LIST OF POTENTIAL CONTAMINANT SOURCES

PWS# 4100851 SWEET HOME, CITY OF

Reference No. (See Figure)	Potential Contaminant Source Type	Name	Approximate Location	City	Method for Listing	Proximity to Sensitive Areas	Relative Risk Level (1)	Potential Impacts	Comments
12	UST - Confirmed Leaking Tanks - DEQ List	76 Gasoline Station (a.k.a. USA MiniMart)	Northeast corner of Main and 13th Ave. (1306	Sweet	Database (2) Field-Observation	Within sensitive	Moderate	Existing contamination from spills, leaks, or improper handling of stored materials may impact the drinking water supply.	
	Lower						Spills or improper handling during tank filling or product distribution may impact the drinking water supply.		
	Moderate						Spills, leaks, or improper handling of automotive fluids, solvents, and repair materials during transportation, use, storage and disposal may impact the drinking water supply.		
	Moderate						Spills, leaks, or improper handling of fuels and other materials during transportation, transfer, and storage may impact the drinking water supply.		
13	Metal Plating/Finishing/Fabrication	General Heating and Sheet Metal	Southwest corner of N 13th Ave. and Nandina	Sweet	Field-Observation	Within sensitive	Higher	Spills, leaks, or improper handling of solvents, metals, and other chemicals during transportation, use, storage and disposal may impact the drinking water	Unknown operations - needs verification.
14	Dry Cleaners	Plaza Laundry and Dry Cleaner	NW Corner of 15th and Nandina (1440 Nandina)	Sweet	Database (2) Field-Observation	Within sensitive	Moderate	Spills, leaks, or improper handling of dry cleaning solvents and other chemicals during transportation, use, storage and disposal may impact the drinking water	
15	Medical/Vet Offices	Sweet Home Veterinary Clinic	Just west of Plaza Laundry (1430 Nandina)	Sweet	Field-Observation	Within sensitive	Lower	Spills, leaks, or improper handling of x-ray, biological, chemical, and radioactive wastes and other materials during transportation, use, storage and disposal may impact the drinking water supply.	
16	Parking Lots/Malls (> 50 Spaces)	Safeway Parking Lot	Northeast corner of 15th and Main	Sweet	Field-Observation	Within sensitive	Higher	Spills and leaks of automotive fluids in parking lots may impact the drinking water supply.	

Note: Sites and areas identified in this Table are only potential sources of contamination to the drinking water. Environmental contamination is not likely to occur when contaminants are used and managed properly.

(1) Where multiple potential contaminant sources exist at a site, the highest level of risk is used.

(2) See Table 3 for database listings (if necessary).

TABLE 2. INVENTORY RESULTS - LIST OF POTENTIAL CONTAMINANT SOURCES

PWS# 4100851 SWEET HOME, CITY OF

Reference No. (See Figure)	Potential Contaminant Source Type	Name	Approximate Location	City	Method for Listing	Proximity to Sensitive Areas	Relative Risk Level (1)	Potential Impacts	Comments
17	Medical/Vet Offices	Dentist Office (Dr. Watts)	at junction of 15th and Nandina (next to Safeway)	Sweet	Field-Observation	Within sensitive	Lower	Spills, leaks, or improper handling of x-ray, biological, chemical, and radioactive wastes and other materials during transportation, use, storage and disposal may impact the drinking water supply.	
18	Pesticide/Fertilizer/Petroleum Storage, Handling, Mixing, & Cleaning Areas	Santiam Feed and Garden	Northwest corner of 13th Ave and Long Street (1244 Long Street)	Sweet	Database (2) Field-Observation	Within sensitive	Higher	Leaks, spills and improper handling of pesticides, fertilizers and petroleum products may impact drinking water	
19	Parking Lots/Malls (> 50 Spaces)	Sweet Home High School	South side of Long St., East of 15th Ave.	Sweet	Field-Observation	Within sensitive	Higher	Spills and leaks of automotive fluids in parking lots may impact the drinking water supply.	
	Schools						Moderate	Over-application or improper handling of cleaning products, pesticides or fertilizers used on the school grounds may impact drinking water. Vehicle maintenance wastes may contribute contaminants.	
20	Apartments and Condominiums	Cascade View Apartments	West of the High School	Sweet	Field-Observation	Within sensitive	Lower	Improper use, storage, and disposal of household and facility maintenance chemicals may impact the drinking water supply. Stormwater run-off or infiltration may carry contaminants to water supply.	
21	Parks	Park/High School Sports Fields	West and East of S. 18th Street, South of Kalmia	Sweet	Field-Observation	Within sensitive	Moderate	Over-application or improper handling of pesticides/fertilizers may impact drinking water. Excessive irrigation may cause transport of contaminants through runoff. Heavy use along edge of waterbody may contribute to erosion, causing turbidity.	

Note: Sites and areas identified in this Table are only potential sources of contamination to the drinking water. Environmental contamination is not likely to occur when contaminants are used and managed properly.

(1) Where multiple potential contaminant sources exist at a site, the highest level of risk is used.

(2) See Table 3 for database listings (if necessary).

TABLE 2. INVENTORY RESULTS - LIST OF POTENTIAL CONTAMINANT SOURCES

PWS# 4100851 SWEET HOME, CITY OF

Reference No. (See Figure)	Potential Contaminant Source Type	Name	Approximate Location	City	Method for Listing	Proximity to Sensitive Areas	Relative Risk Level (1)	Potential Impacts	Comments
22	Automobiles - Repair Shops	School District Bus Maintenance Facility	East side of S. 18th St., North of Grape and south of Kalmia	Sweet	Database (2) Field-Observation	Within sensitive	Moderate	Spills, leaks, or improper handling of automotive fluids, solvents, and repair materials during transportation, use, storage and disposal may impact the drinking water supply.	PWS should verify presence of repair shop.
	Fleet/Trucking/Bus Terminals						Moderate	Spills, leaks, or improper handling of fuels, grease, solvents, and other materials from vehicle service, fueling, and parking areas may impact the drinking water	PWS should verify presence of repair shop.
	UST - Confirmed Leaking Tanks - DEQ List						Moderate	Existing contamination from spills, leaks, or improper handling of stored materials may impact the drinking water supply.	PWS should verify presence of repair shop.
23	Schools	Linn Benton Community	East of 13th, North side of Long St.	Sweet	Field-Observation	Within sensitive	Moderate	Over-application or improper handling of cleaning products, pesticides or fertilizers used on the school grounds may impact drinking water. Vehicle maintenance wastes may contribute contaminants.	
24	Wood/Pulp/Paper Processing and	Willamette Industries Midway Veneer Division	East end of Green River Rd. (off Clark Mill Rd.)	Sweet	Database (2) Field-Observation	Within sensitive	Higher	Spills, leaks, or improper handling of wood preservatives and other chemicals during transportation, use, storage and disposal may impact the drinking water supply.	
25	Homesteads - Rural - Septic Systems (< 1/acre)	Rural Residential/Farm Area	Clark Mill Road and Green Mill Road	Sweet	Field-Observation	Within sensitive	Lower	If not properly sited, designed, installed, and maintained, septic systems can impact drinking water. Use of drain cleaners and dumping household hazardous wastes can result in groundwater	
26	Homesteads - Rural - Machine Shops/Equipment Maintenance	Vehicle Maintenance/Storage	1332 Clark Mill Road /Northeast of the railroad crossing	Sweet	Field-Observation	Within sensitive	Higher	Spills, leaks, or improper handling of solvents, fuels, and other materials or chemicals during transportation, use, storage and disposal may impact the drinking water supply.	

Note: Sites and areas identified in this Table are only potential sources of contamination to the drinking water. Environmental contamination is not likely to occur when contaminants are used and managed properly.

(1) Where multiple potential contaminant sources exist at a site, the highest level of risk is used.

(2) See Table 3 for database listings (if necessary).

TABLE 2. INVENTORY RESULTS - LIST OF POTENTIAL CONTAMINANT SOURCES

PWS# 4100851 SWEET HOME, CITY OF

Reference No. (See Figure)	Potential Contaminant Source Type	Name	Approximate Location	City	Method for Listing	Proximity to Sensitive Areas	Relative Risk Level (1)	Potential Impacts	Comments
27	Random Dump	Random	Southwest of Clark Mill Road near railroad crossing	Sweet	Field-Observation	Within sensitive	Higher	Illegal trash and debris containing chemicals and hazardous materials may cause contamination to groundwater or surface water supply.	
28	Wastewater Treatment Plants/Collection Stations	Sweet Home Wastewater Treatment Plant	East of Pleasant Valley, South of River	Sweet	Database (2) Field-Observation	Within sensitive	Higher	Improper management of wastewater, treatment chemicals, or equipment maintenance materials may impact drinking water supply.	
29	Housing - High Density (> 1 House/0.5 acres)	High-Density Residential Area	1000-10058 North River	Sweet	Field-Observation	Within sensitive	Moderate	Improper use, storage, and disposal of household chemicals may impact the drinking water supply. Stormwater run-off or infiltration may carry contaminants to drinking water supply.	
	Septic Systems - High Density (> 1 system/acre)						Moderate	If not properly sited, designed, installed, and maintained, septic systems can impact drinking water. Cumulative effects of multiple systems in an area may impact drinking water supply.	
30	Homesteads - Rural - Septic Systems (< 1/acre)	Rural Residential Area	Northside	Sweet	Field-Observation	Within sensitive	Lower	If not properly sited, designed, installed, and maintained, septic systems can impact drinking water. Use of drain cleaners and dumping household hazardous wastes can result in groundwater	
31	UST - Confirmed Leaking Tanks - DEQ List	Sweet Home Post Office Leaking	SE Corner of 13th Ave and Long St.	Sweet	Database (2) Field-Observation	Within sensitive	Moderate	Existing contamination from spills, leaks, or improper handling of stored materials may impact the drinking water supply.	
32	Homesteads - Rural - Septic Systems (< 1/acre)	Rural Residential Area	North of River along North 18th Lane	Sweet	Field-Observation	Within sensitive	Lower	If not properly sited, designed, installed, and maintained, septic systems can impact drinking water. Use of drain cleaners and dumping household hazardous wastes can result in groundwater	

Note: Sites and areas identified in this Table are only potential sources of contamination to the drinking water. Environmental contamination is not likely to occur when contaminants are used and managed properly.

(1) Where multiple potential contaminant sources exist at a site, the highest level of risk is used.

(2) See Table 3 for database listings (if necessary).

TABLE 2. INVENTORY RESULTS - LIST OF POTENTIAL CONTAMINANT SOURCES

PWS# 4100851 SWEET HOME, CITY OF

Reference No. (See Figure)	Potential Contaminant Source Type	Name	Approximate Location	City	Method for Listing	Proximity to Sensitive Areas	Relative Risk Level (1)	Potential Impacts	Comments
33	Homesteads - Rural - Septic Systems (< 1/acre)	Rural Residential Area	Beauty view Lane	Sweet	Field-Observation	Within sensitive	Lower	If not properly sited, designed, installed, and maintained, septic systems can impact drinking water. Use of drain cleaners and dumping household hazardous wastes can result in groundwater	
34	Homesteads - Rural - Septic Systems (< 1/acre)	Rural Residential Area	Bennett Lane	Sweet	Field-Observation	Within sensitive	Lower	If not properly sited, designed, installed, and maintained, septic systems can impact drinking water. Use of drain cleaners and dumping household hazardous wastes can result in groundwater	
35	Transportation - Stream Crossing - Perennial	Highway 20 Crossing Wiley Creek	West of 53rd and Highway 20	Sweet	Field-Observation	Within sensitive	Higher	Road building, maintenance & use may increase erosion & slope failure causing turbidity. Vehicle use increases the risk of leaks or spills of fuel & other chemicals. Over-application/improper handling of pesticides in right-of-way may also impact	
36	Transportation - Freeways/State Highways/Other Heavy Use Roads	Highway 20/Main Street	Runs east/west through Sweet Home and Foster	Sweet	Field-Observation	Within sensitive	Higher	Vehicle use increases the risk for leaks or spills of fuel & other haz. materials. Road building, maintenance & use can increase erosion/slope failure causing turbidity. Over-application or improper handling of pesticides/fertilizers may impact water.	
37	Wood/Pulp/Paper Processing and	Clear Lumber Company	North end of 47th (4803 47th Ave.)	Sweet	Database (2) Field-Observation	Within sensitive	Higher	Spills, leaks, or improper handling of wood preservatives and other chemicals during transportation, use, storage and disposal may impact the drinking water supply.	
38	Cemeteries - Pre-1945	Gilliland Cemetery	South of Highway 20/ South of Foster	Sweet	Field-Observation	Within sensitive	Lower	Embalming fluids (for example, arsenic) and decomposition by-products may impact drinking water supply.	

Note: Sites and areas identified in this Table are only potential sources of contamination to the drinking water. Environmental contamination is not likely to occur when contaminants are used and managed properly.

(1) Where multiple potential contaminant sources exist at a site, the highest level of risk is used.

(2) See Table 3 for database listings (if necessary).

TABLE 2. INVENTORY RESULTS - LIST OF POTENTIAL CONTAMINANT SOURCES

PWS# 4100851 SWEET HOME, CITY OF

Reference No. (See Figure)	Potential Contaminant Source Type	Name	Approximate Location	City	Method for Listing	Proximity to Sensitive Areas	Relative Risk Level (1)	Potential Impacts	Comments
39	UST - Status Unknown	Langmack Airport	West of cemetery between Airport Road and	Sweet	Database (2) Field-Observation	Within sensitive	Moderate	Spills, leaks, or improper handling of stored materials may impact the drinking water supply.	
	Moderate						Spills, leaks, or improper handling of fuels, de-icers, and other chemicals during transportation, use, storage and disposal may impact the drinking water supply.		
40	Housing - High Density (> 1 House/0.5 acres)	Residential Development in Foster	Foster	Foster	Field-Observation	Within sensitive	Moderate	Improper use, storage, and disposal of household chemicals may impact the drinking water supply. Stormwater run-off or infiltration may carry contaminants to drinking water supply.	
	Moderate						If not properly sited, designed, installed, and maintained, septic systems can impact drinking water. Cumulative effects of multiple systems in an area may impact drinking water supply.		
41	Utility Stations - Maintenance Transformer	US Army Corps of Engineers	Highway 20 and 53rd Street (north side)	Sweet	Database (2) Field-Observation	Within sensitive	Higher	Spills, leaks, or improper handling of chemicals and other materials including PCBs during transportation, use, storage and disposal may impact the drinking water	
42	Wood/Pulp/Paper Processing and	Rainier Wood	Where the junction of 15th and Tamarack would	Sweet	Database (2) Field-Observation	Within sensitive	Higher	Spills, leaks, or improper handling of wood preservatives and other chemicals during transportation, use, storage and disposal may impact the drinking water supply.	
43	Housing - High Density (> 1 House/0.5 acres)	High-Density Housing on Tamarack	West of Rainier Wood	Sweet	Field-Observation	Within sensitive	Moderate	Improper use, storage, and disposal of household chemicals may impact the drinking water supply. Stormwater run-off or infiltration may carry contaminants to drinking water supply.	

Note: Sites and areas identified in this Table are only potential sources of contamination to the drinking water. Environmental contamination is not likely to occur when contaminants are used and managed properly.

(1) Where multiple potential contaminant sources exist at a site, the highest level of risk is used.

(2) See Table 3 for database listings (if necessary).

TABLE 2. INVENTORY RESULTS - LIST OF POTENTIAL CONTAMINANT SOURCES

PWS# 4100851 SWEET HOME, CITY OF

Reference No. (See Figure)	Potential Contaminant Source Type	Name	Approximate Location	City	Method for Listing	Proximity to Sensitive Areas	Relative Risk Level (1)	Potential Impacts	Comments
44	Other Agriculture/Hatcher	South Santiam Hatchery	Downstream of Foster Dam, Northside of River	Foster	Database (2) Field-Observation	Within sensitive	Moderate	The impacts of this potential contaminant source will be addressed during the enhanced inventory.	
45	Upstream Reservoirs/Dams	Foster Dam including the powerhouse	Powerhouse is downstream of the dam on the south side of the	Foster	Database (2) Field-Observation	Within sensitive	Moderate	During major storm events, reservoirs may contribute to prolonged turbidity for downstream intakes for drinking water.	PWS should verify regulatory database listings are for Foster Dam - several indicate facility name of "Green Peter/Foster Dam"
	Utility Stations - Maintenance Transformer						Higher	Spills, leaks, or improper handling of chemicals and other materials including PCBs during transportation, use, storage and disposal may impact the drinking water	PWS should verify regulatory database listings are for Foster Dam - several indicate facility name of "Green Peter/Foster Dam"
46	UST - Confirmed Leaking Tanks - DEQ List	Franko Station #31 - a.k.a. Blue Chip Properties	1600 N. Main	Sweet	Database (2) Field-Observation	Within sensitive	Moderate	Existing contamination from spills, leaks, or improper handling of stored materials may impact the drinking water supply.	PCS location based on regulatory database search - needs verification.
47	River Recreation - Heavy Use (inc. campgrounds)	Cascadia State Park	Upstream of Foster Reservoir along South Santiam River	Sweet		Within sensitive	Moderate	Inadequate disposal of human wastes may contribute bacteria and nutrients to the drinking water supply. Heavy use may contribute to streambank erosion causing turbidity. Fuel spills and emissions may also contribute to contamination.	PWS should verify risks associated with this potential source.

Note: Sites and areas identified in this Table are only potential sources of contamination to the drinking water. Environmental contamination is not likely to occur when contaminants are used and managed properly.

(1) Where multiple potential contaminant sources exist at a site, the highest level of risk is used.

(2) See Table 3 for database listings (if necessary).

TABLE 2. INVENTORY RESULTS - LIST OF POTENTIAL CONTAMINANT SOURCES

PWS# 4100851 SWEET HOME, CITY OF

Reference No. (See Figure)	Potential Contaminant Source Type	Name	Approximate Location	City	Method for Listing	Proximity to Sensitive Areas	Relative Risk Level (1)	Potential Impacts	Comments
48	River Recreation - Heavy Use (inc. campgrounds)	National Forest Service Campgrounds	Along South Santiam	Sweet		Within sensitive	Moderate	Inadequate disposal of human wastes may contribute bacteria and nutrients to the drinking water supply. Heavy use may contribute to streambank erosion causing turbidity. Fuel spills and emissions may also contribute to contamination.	Includes Longbow, Trout Creek, Yukwah, Fernview, and House Rock campgrounds. Presence based on information provided by US Forest Service. PWS/community should verify location and level of risk during enhanced inventory.
49	River Recreation - Heavy Use (inc. campgrounds)	County Parks/Campgrounds	At Foster Reservoir and Green Peter Lake	Sweet		Within sensitive	Moderate	Inadequate disposal of human wastes may contribute bacteria and nutrients to the drinking water supply. Heavy use may contribute to streambank erosion causing turbidity. Fuel spills and emissions may also contribute to contamination.	Includes activities at Sunnyside County Park and Witcomb County Park. PWS should verify risks associated with these potential sources.
50	Managed Forest Land - Road Density (> 2)	High-density road areas	Adjacent to South Santiam and upstream of Foster Reservoir and Green Peter Lake	Sweet		Within sensitive	Higher	Road building, maintenance, and usage may contribute to erosion and slope failure causing turbidity in drinking water supply. Vehicle usage increases the risks of leaks or spills of petroleum products and other hazardous materials.	Presence based on information provided by US Forest Service. PWS/community should verify location and level of risk during enhanced inventory.
51	Managed Forest Land - Road Density (> 2)	High-density road areas	Adjacent to Wiley Creek and tributaries	Sweet		Within sensitive	Higher	Road building, maintenance, and usage may contribute to erosion and slope failure causing turbidity in drinking water supply. Vehicle usage increases the risks of leaks or spills of petroleum products and other hazardous materials.	Presence based on information provided by US Forest Service. PWS/community should verify location and level of risk during enhanced inventory.

Note: Sites and areas identified in this Table are only potential sources of contamination to the drinking water. Environmental contamination is not likely to occur when contaminants are used and managed properly.

(1) Where multiple potential contaminant sources exist at a site, the highest level of risk is used.

(2) See Table 3 for database listings (if necessary).

TABLE 2. INVENTORY RESULTS - LIST OF POTENTIAL CONTAMINANT SOURCES

PWS# 4100851 SWEET HOME, CITY OF

Reference No. (See Figure)	Potential Contaminant Source Type	Name	Approximate Location	City	Method for Listing	Proximity to Sensitive Areas	Relative Risk Level (1)	Potential Impacts	Comments
52	Managed Forest Lands - Status Unknown	Multiple areas of forest harvest on private, state, and federal lands	through out DWPA	Sweet		Within sensitive	Higher	Cutting and yarding of trees may contribute to increased erosion, resulting in turbidity and chemical changes in drinking water supply. Over-application or improper handling of pesticides or fertilizers may impact drinking water source.	PWS/community should verify presence, location and level of risk during enhanced inventory.

Note: Sites and areas identified in this Table are only potential sources of contamination to the drinking water. Environmental contamination is not likely to occur when contaminants are used and managed properly.

(1) Where multiple potential contaminant sources exist at a site, the highest level of risk is used.

(2) See Table 3 for database listings (if necessary).